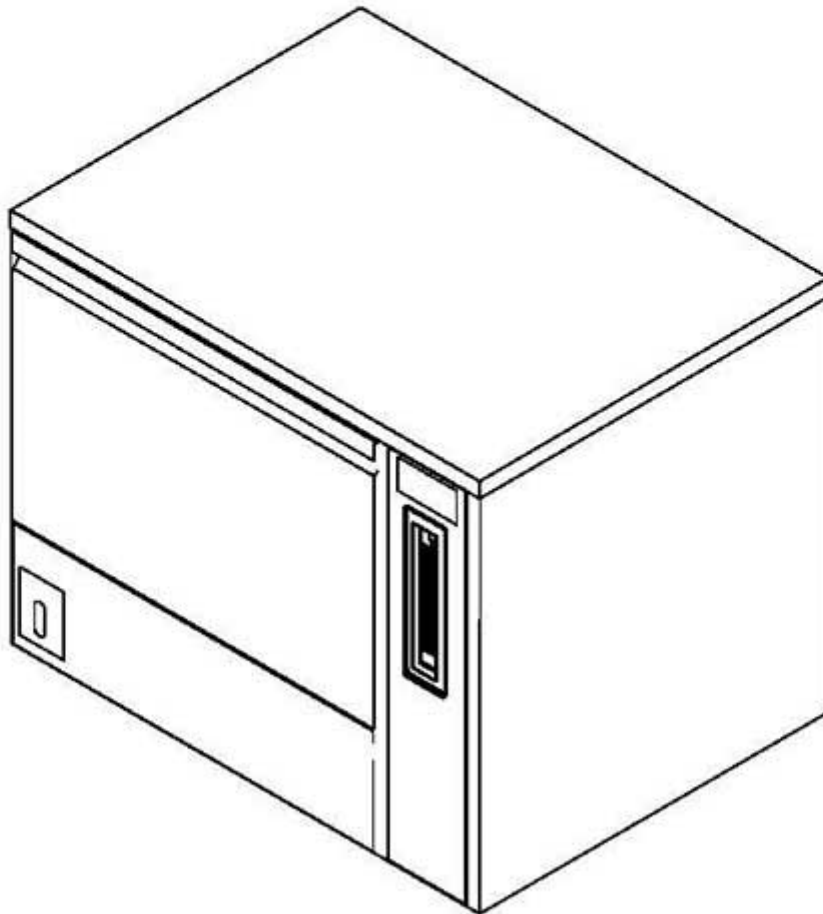


winterhalter

Spare parts list GSR 36, GSR 36E



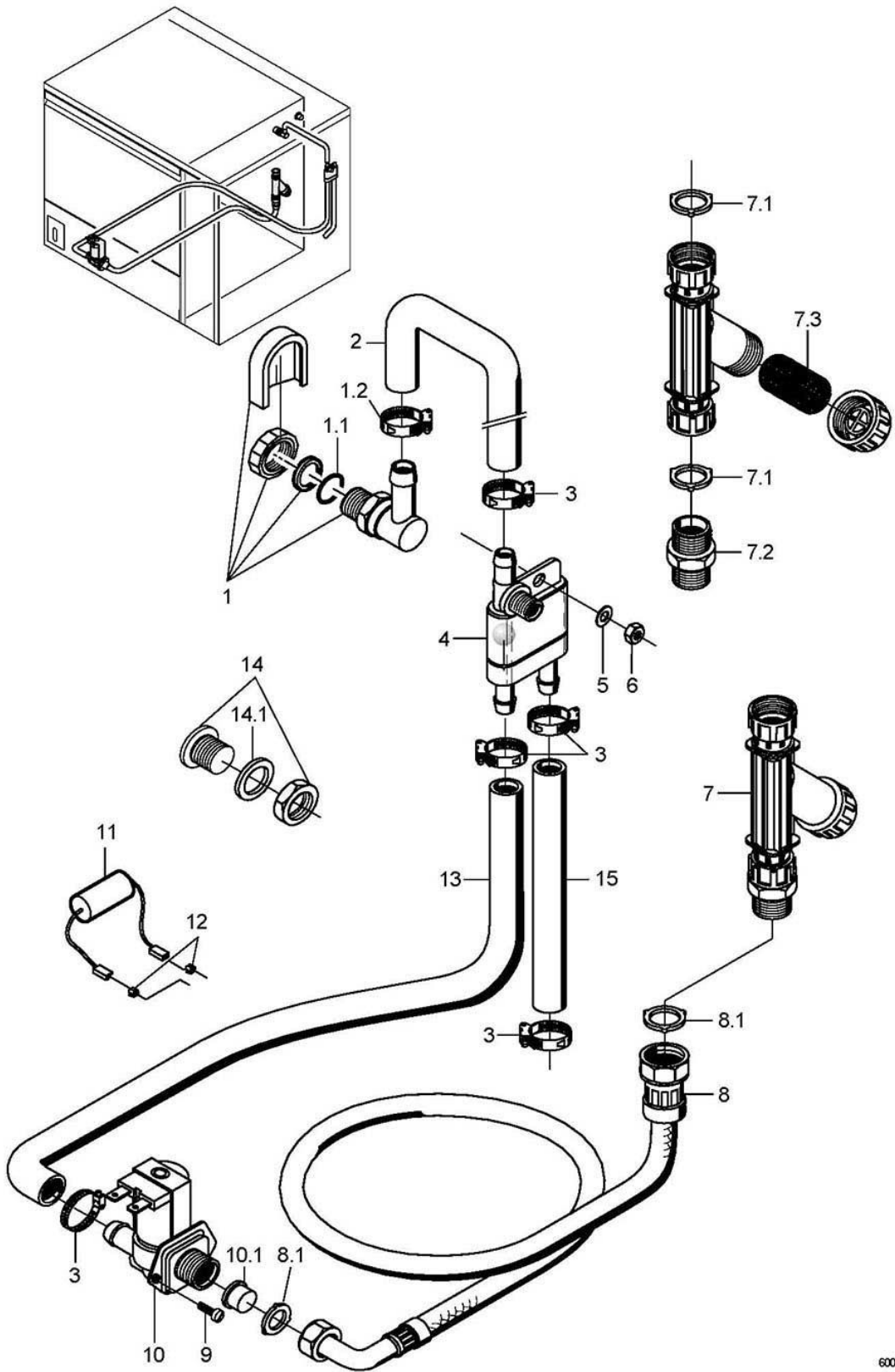
Drawn up: 04/97

Processed: 02.08.09

Parts no.: 89002536

Contents

Water inlet -Standard-		Page 1 - 2
Water inlet (Tundish GB)	to machine no.: 366 560	Page 3 - 4
Water inlet (Tundish GB)	From machine no.: 366 561	Page 5 - 6
SoftMatik (softener) - GSR 36E		Page 7 - 8
Tank heating and water drain		Page 9 - 10
Wash pump		Page 11 - 12
Wash system	to machine no.: 366 560	Page 13 - 14
Wash system	From machine no.: 366 561	Page 15 - 16
Reversing	From machine no.: 352 811	Page 17 - 18
Pressure boiler		Page 19 - 20
Pressure-independent boiler		Page 21 - 22
Bottom rinse system	to machine no.: 366 710	Page 23 - 24
Bottom rinse system	From machine no.: 366 711	Page 25 - 26
Rinse system top		Page 27 - 28
Rinse aid dosing		Page 29 - 30
Detergent dosing		Page 31 - 32
Chassis, container and panelling		Page 33 - 34
Door		Page 35 - 36
Electrical parts I		Page 37 - 38
Electrical parts II		Page 39 - 40
Drain pump (optional)	to machine no.: 365 334	Page 41 - 42
Drain pump (optional)	From machine no.: 365 335	Page 43 - 44
Cold water pre-rinse (optional)		Page 45 - 46

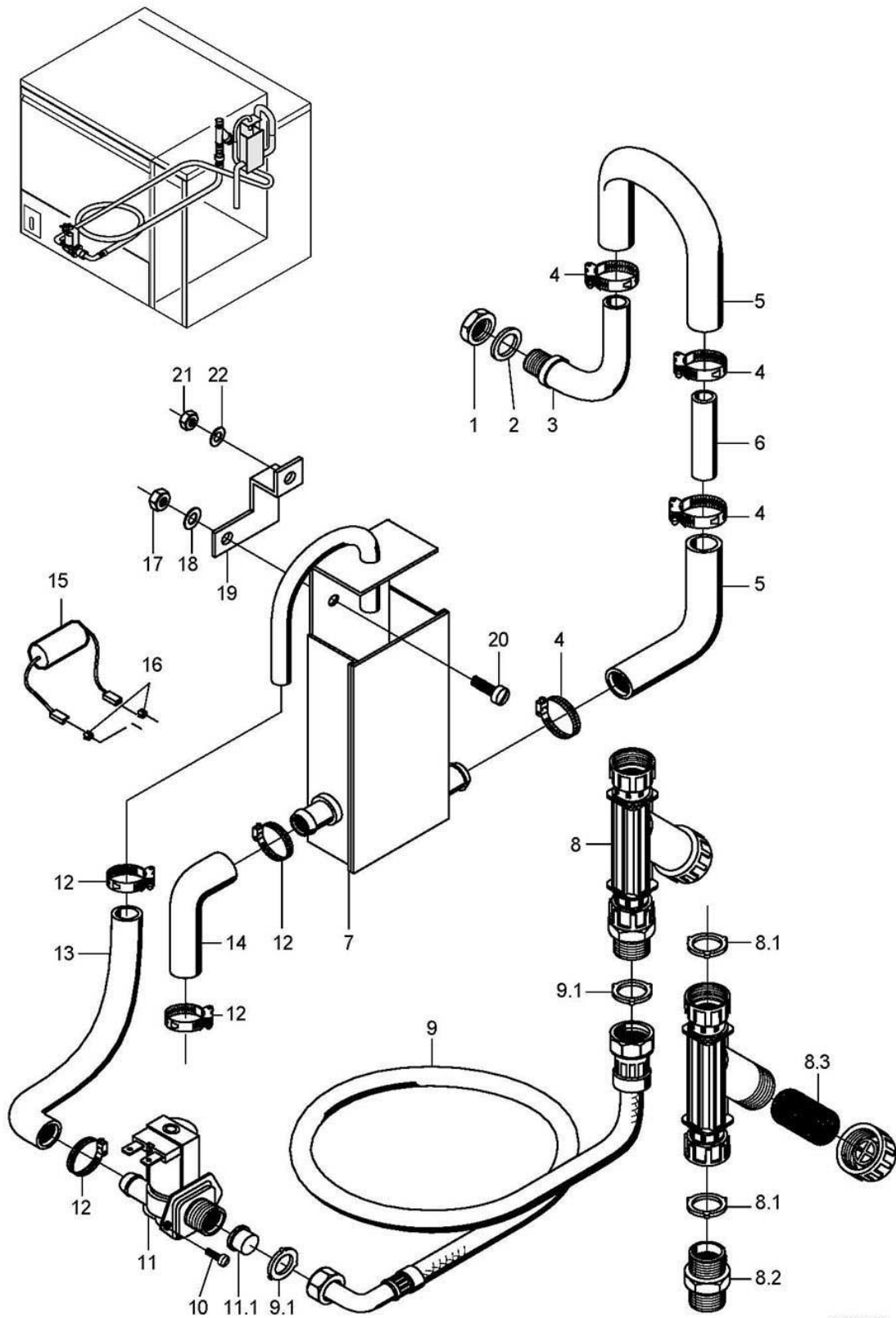


60002868-00

GSR 36, GSR 36E

Water inlet -Standard-

Item.	Designation	Parts no.:	Pc.	Notes
1	Water inlet, 3-part set	55 31 007		Pressure boiler
1.1	Gasket; D21 X D28 X 2,0	27 09 011		replaced by 55 31 007
1.1	Gasket; D20,5 X D28,5 X 2,0	27 01 002		replaced by 55 31 007
1.1	O-ring; 20 X 3	27 07 031		
1.2	Hose clamp; D12-22 X 9	28 02 105		
2	Hose bend; DN12,5 X 4,0	40 03 056		Pressure boiler
3	Hose clamp; D12-22 X 9	28 02 105		
4	Reverse suction preventer, top; PN6 BEI 60 GRAD C	35 01 193		Pressure boiler
5	Washer; D6,4 X D12,5 X 1,6	22 01 302		Pressure boiler
6	Hexagonal nut; M6 SELBSTSICHERND	21 05 304		Pressure boiler
7	Dirt trap; 150 µM	80002153		incl. item 7.1 – 7.3
7.1	Gasket; D16 X D24 X 3,0	80002241	2	
7.2	Double nipple; G 3/4" X 40; SW30	80002167		
7.3	Strainer; D27 X 67 X 150µM	80002728		
8	Water supply hose; DN13 X 3,5; 2500	40 02 060		incl. item 8.1
8.1	Gasket; D16 X D24 X 3,0	80002241	2	
9	Countersunk screw; M4 X 8	20 10 309		
10	Solenoid valve without flow control; 220-240V/50-60HZ	31 06 187		Pressure boiler
10	Solenoid valve without flow control; 180-220V/50-60HZ	31 06 199		Japan; Machines with pressurized boiler
10	Solenoid valve flow restrictor 5l; 220-240V/50-60HZ	31 06 174		GSR 36E
10	5 l solenoid valve set; 200-240V/50-60HZ/+/-10%	60004147		Japan; GSR 36E
10	Solenoid valve flow restrictor 8l; 220-240V/50-60HZ	31 06 179		Pressure-independent boiler
10	Solenoid valve flow restrictor 8l; 180-220V/50-60HZ	31 06 197		Japan; Pressure-independent boiler
10.1	Solenoid valve filter	31 06 186		
11	RC element; 0,15 MICRO F; 3,3 KOHM	31 13 114		
12	Flat plug; 6,3 X 0,8	31 12 018		
13	Hose elbow 90°; DN12,5X4,0;40X1400	60001610		
14	Dummy plug; G 1/2" X 21,4;SW10;SW5	70004912		
14.1	O-ring; 20 X 2,5	27 07 004		
o.P.	Extention for metal hose; DN15 X 1000 MM; G3/4"	29 01 307		Additional equipment
o.P.	Gasket; D16 X D24 X 3,0	80002241		Additional equipment

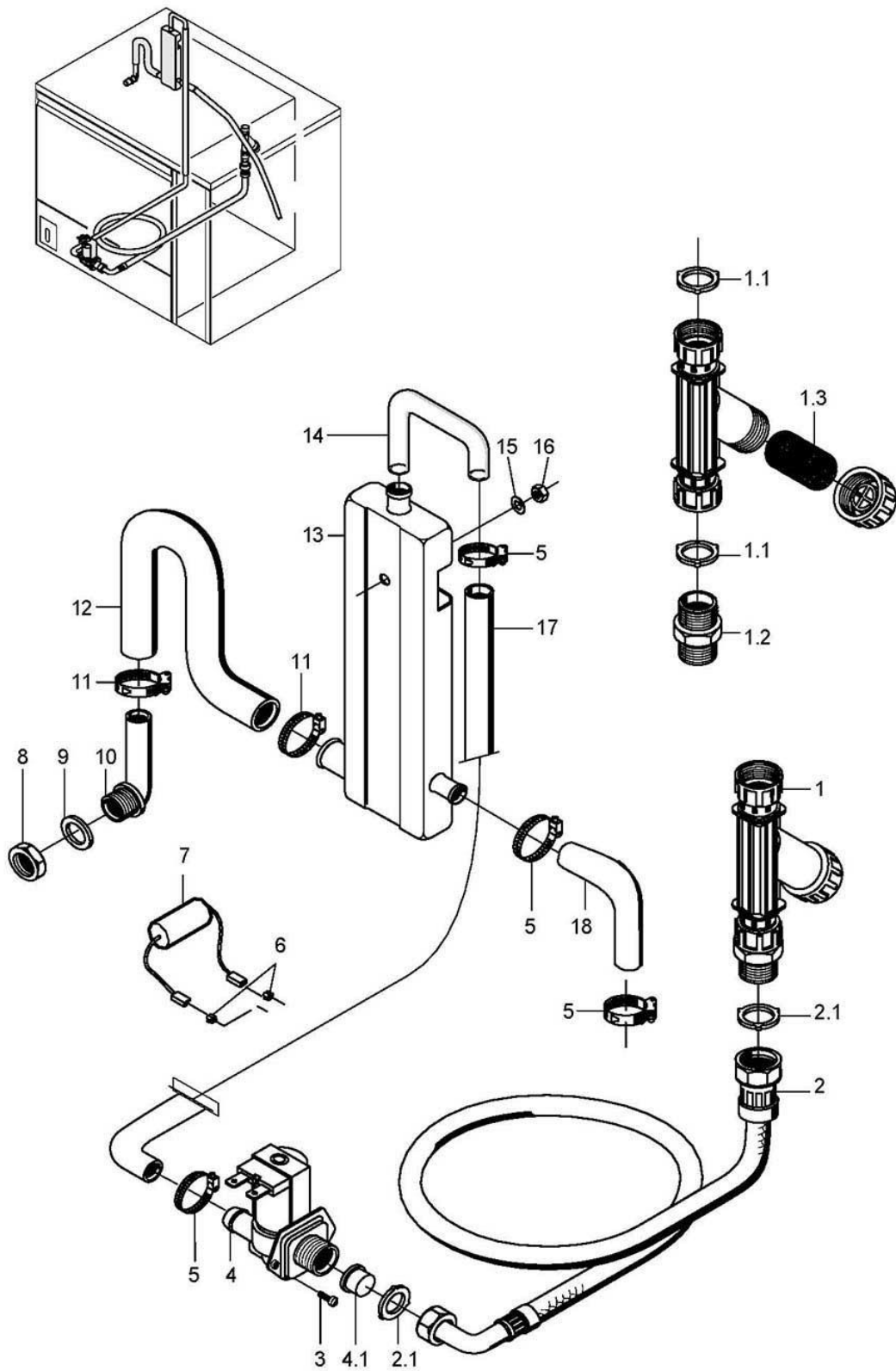


60002869-00

GSR 36, GSR 36E

Water inlet (Tundish GB) to machine no.: 366 560

Item.	Designation	Parts no.:	Pc.	Notes
1	Hexagon nut; G 3/4" X 18,0; SW32	30 09 502		
2	Gasket; D26 X D36 X 2,0	27 01 003		
3	Angle for wash manifold; G 3/4"; 55,5 X 125	35 01 005		adapt
4	Hose clamp; D24-44 X 12	28 02 309		
5	Hose elbow; DN25 X 4,0	60002446	2	adapt
6	Pipe; D25 X 1,5 X 50	80000652		
7	Tundish container	60002541		
8	Dirt trap; 150 µM	80002153		incl. item 8.1 - 8.3
8.1	Gasket; D16 X D24 X 3,0	80002241	2	
8.2	Double nipple; G 3/4" X 40; SW30	80002167		
8.3	Strainer; D27 X 67 X 150µM	80002728		
9	Water supply hose; DN13 X 3,5; 2500	40 02 060		incl. item 9.1
9.1	Gasket; D16 X D24 X 3,0	80002241	2	
10	Countersunk screw; M4 X 8	20 10 309		
11	Solenoid valve flow restrictor 5l; 220-240V/50-60HZ	31 06 174		incl. item 11.1
11.1	Solenoid valve filter	31 06 186		
12	Hose clamp; D12-22 X 9	28 02 105		
13	Industrial hose; DN13 X 3,5	40 02 035		1600 mm; "By-the-metre" goods
14	Hose elbow 90°; DN12,5X4,0;40X1400	60001610		adapt
15	RC element; 0,15 MICRO F; 3,3 KOHM	31 13 114		
16	Flat plug; 6,3 X 0,8	31 12 018	2	
17	Hexagonal nut; M5 SELBSTSICHERND	21 05 302		
18	Washer; D5,3 X D10 X 1,0	22 01 300		
19	Elbow; 1,5 X 45 X 80	60002412		
20	Cup screw; M5 X 10	75100426		
21	Hexagonal nut; M6 SELBSTSICHERND	21 05 304		
22	Washer; D6,4 X D12,5 X 1,6	22 01 302		

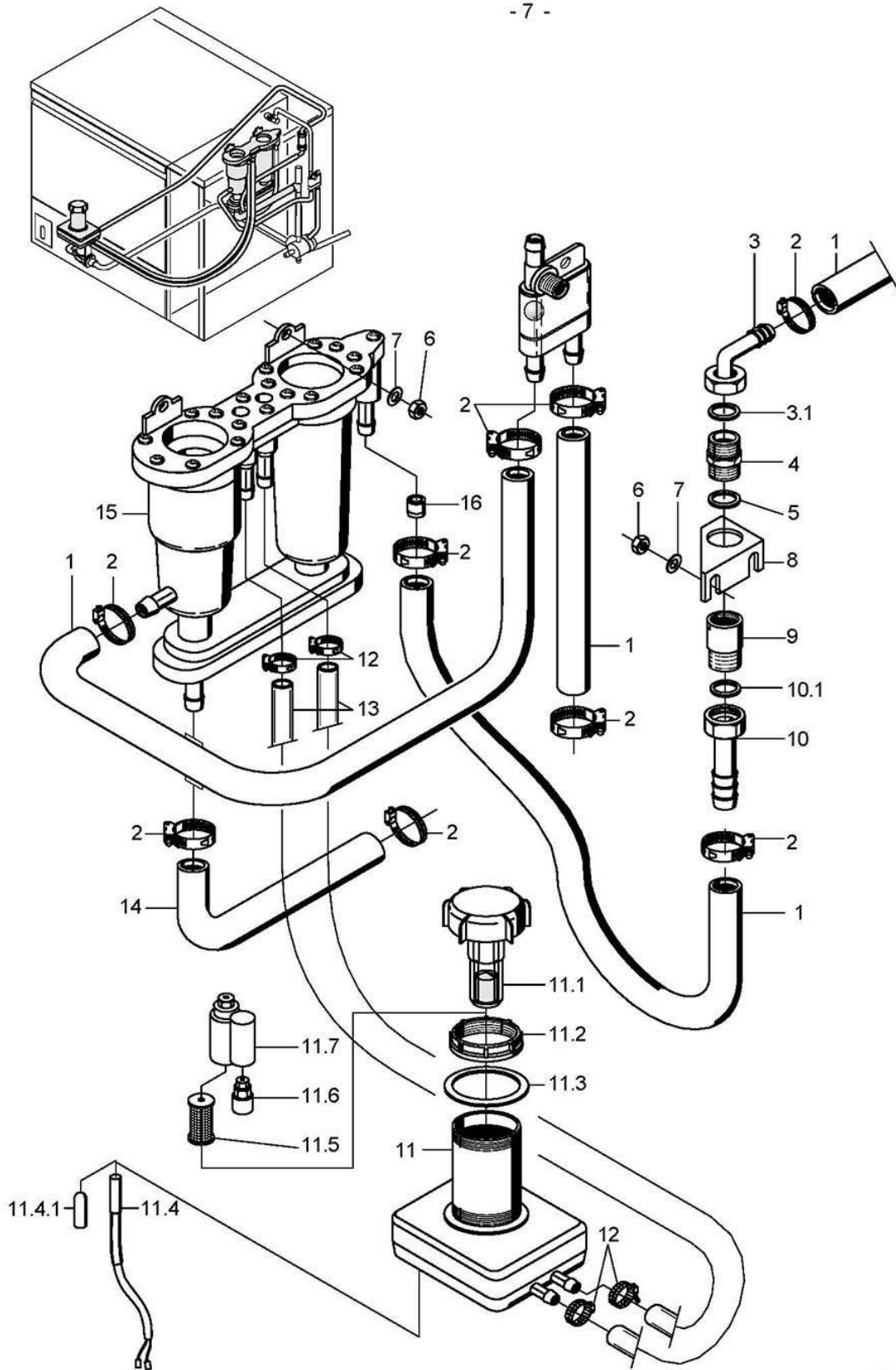


60002870-00

GSR 36, GSR 36E

Water inlet (Tundish GB) From machine no.: 366 561

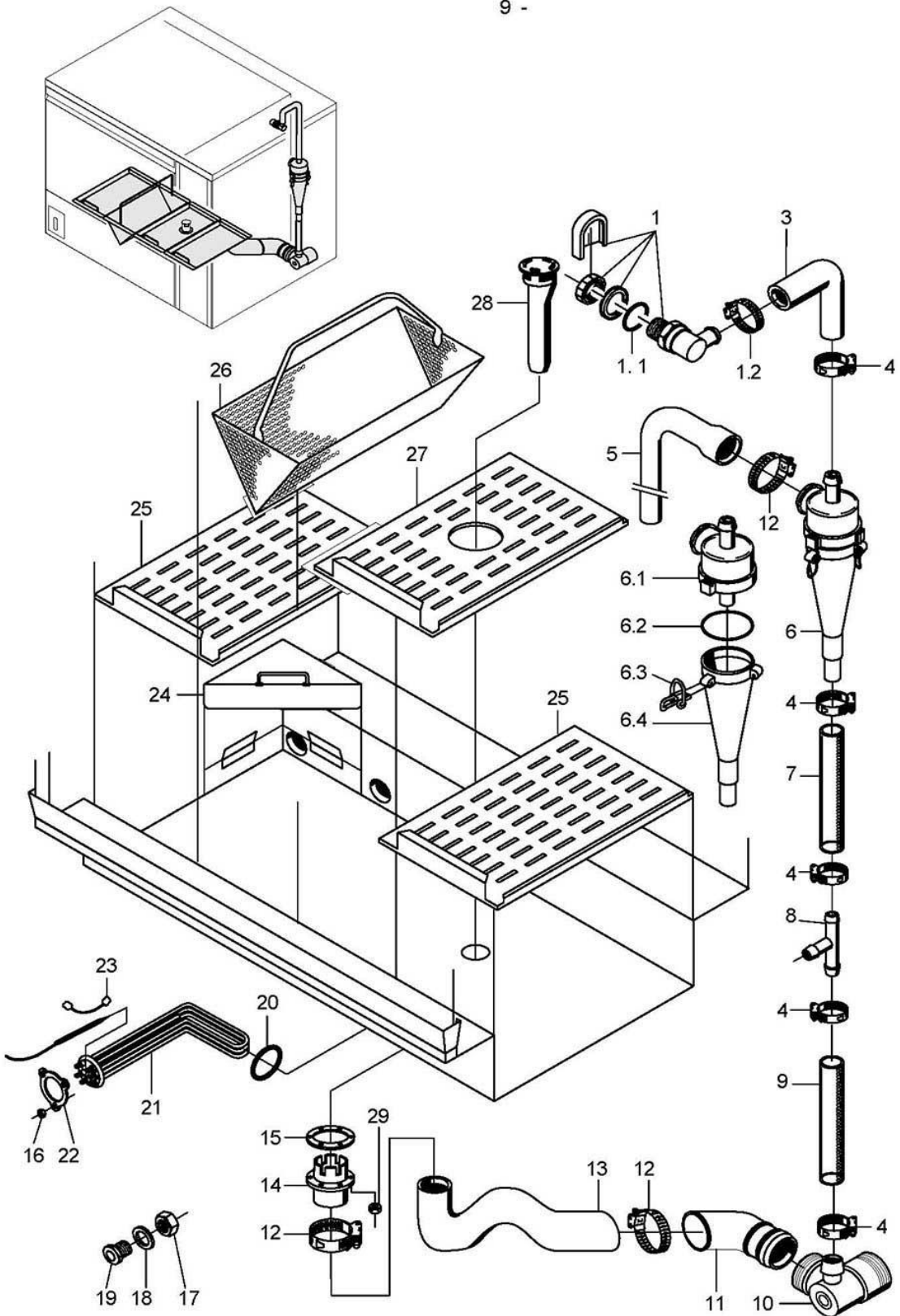
Item.	Designation	Parts no.:	Pc.	Notes
1	Dirt trap; 150 µM	80002153		
1.1	Gasket; D16 X D24 X 3,0	80002241	2	
1.2	Double nipple; G 3/4" X 40; SW30	80002167		
1.3	Strainer; D27 X 67 X 150µM	80002728		
2	Water supply hose; DN13 X 3,5; 2500	40 02 060		
2.1	Gasket; D16 X D24 X 3,0	80002241	2	
3	Countersunk screw; M4 X 8	20 10 309		
4	Solenoid valve flow restrictor 5l; 220-240V/50-60HZ	31 06 174		
4.1	Solenoid valve filter	31 06 186		
5	Hose clamp; D12-22 X 9	28 02 105		
6	Flat plug; 6,3 X 0,8	31 12 018	2	
7	RC element; 0,15 MICRO F; 3,3 KOHM	31 13 114		
8	Hexagon nut; G 3/4" X 18,0; SW32	30 09 502		
9	Gasket; D26 X D36 X 2,0	27 01 003		
10	Manifold elbow long; G 3/4"; 51 X 140	35 01 149		adapt
11	Hose clamp; D24-44 X 12	28 02 309		
12	Hose elbow; DN25 X 4,0	60002446		adapt
13	Intermediate container; 39 X 131 X 293	60002542		
14	Pipe elbow; DN12 X DN14 X 2,0	60002507		
15	Washer; D5,3 X D10 X 1,0	22 01 300		
16	Hexagonal nut; M5 SELBSTSICHERND	21 05 302		
17	Industrial hose; DN13 X 3,5	40 02 035		1600 mm; "By-the-metre" goods
18	Hose elbow 90°; DN12,5X4,0;40X1400	60001610		adapt



60002871-00

GSR 36, GSR 36E**SoftMatik (softener) - GSR 36E**

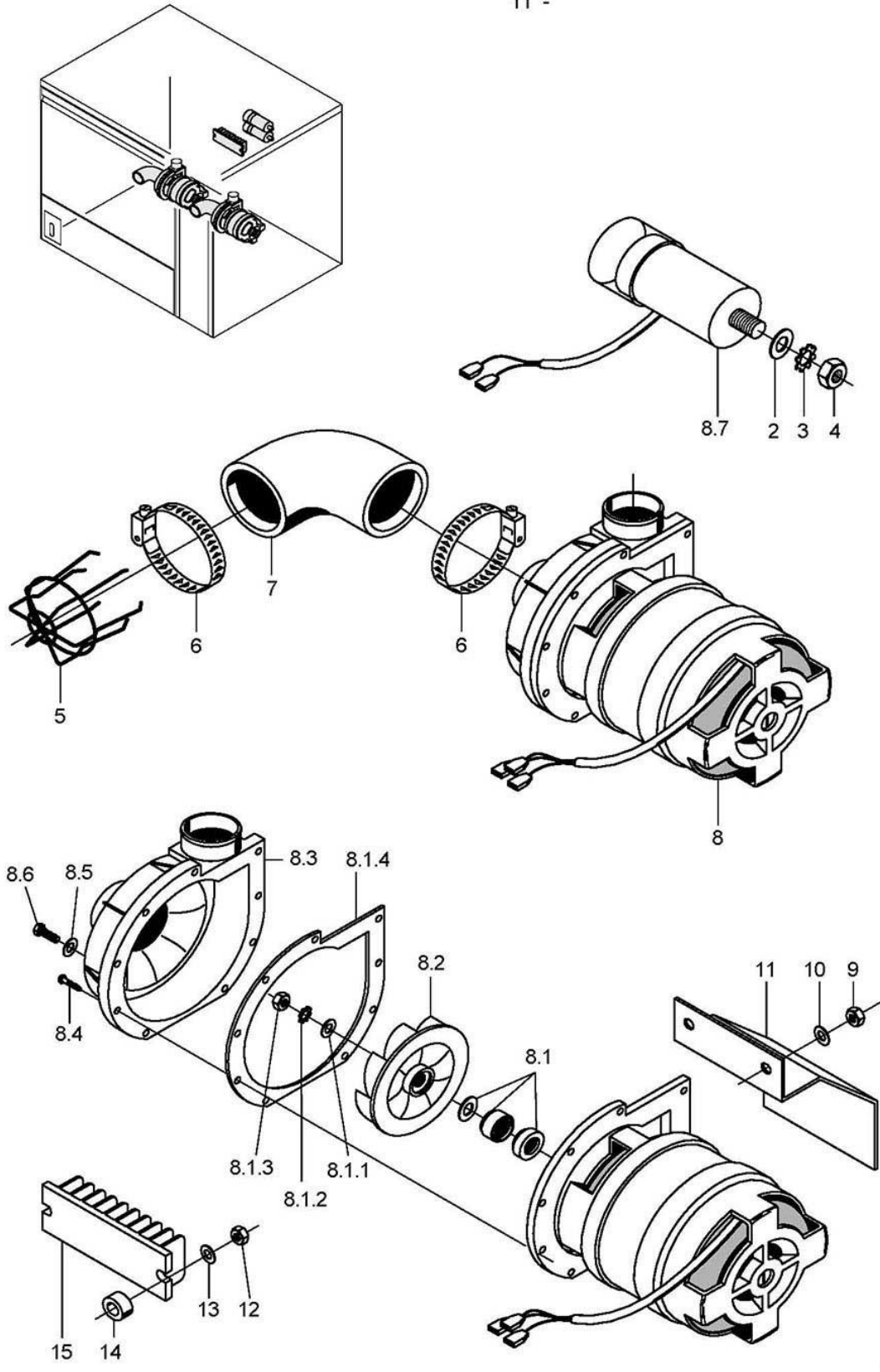
Item.	Designation	Parts no.:	Pc.	Notes
1	Hose elbow 90°; DN12,5X4,0;40X1400	60001610		adapt
2	Hose clamp; D12-22 X 9	28 02 105		
3	Hose nipple, angled; D18	60002474		incl. item 3.1
3.1	Gasket; D16 X D24 X 3,0	80002241		
4	Double nipple; R 3/4" X 40; SW28	51 01 369		
5	Gasket; D19,5 X D24 X 1,5	27 09 010		
6	Hexagonal nut; M5 SELBSTSICHERND	21 05 302		
7	Washer; D5,3 X D10 X 1,0	22 01 300		
8	Elbow; 1,25 X 52 X 56	60002416		
9	Anti-vacuum dev./backflow prev	29 03 237		
10	Hose coupling; R 3/4" X 1/2"	60002453		incl. item 10.1
10.1	Gasket; D16 X D24 X 3,0	80002241		
11	Set exchange of salt container	55 28 217		incl. item 11.1 - 11.7
11.1	Cap	83000372		
11.2	Coupling nut; S65 X 4	83000380		
11.3	Gasket; D65 X D80 X 3,0	83000384		
11.4	Set magnet switch softmatik	55 28 198		
11.4.	End cap; D5,7 X 25,4	35 06 180		
11.5	Suction sieve; D16,7 X 53	83000362		
11.6	Jet cpl.	83000355		
11.7	Cap	83000354		
12	Hose clamp; D10-16 X 9	28 02 307		
13	Hose; DN9 X 3,0;	40 01 040		110 mm; metre ware; up to mach. no. 366 560
13	Hose; DN9 X 3,0;	40 01 040		850 mm; metre ware; from mach. no. 366 561
14	Reducing elbow; DN10 X DN14	40 03 003		
15	Water softener softmatik	83000334		
16	Solenoid valve flow restrictor 5l; 220-240V/50-60HZ	31 06 174		
o.P.	Regeneration salt; 12 KG	33 05 017		
o.P.	Filling funnel; D49 X D120 X 150	83000371		
o.P.	Tool for locking nut; 3,0 X 85,5 X 187,75	83000499		for 11.2



60002872-00

GSR 36, GSR 36E**Tank heating and water drain**

Item.	Designation	Parts no.:	Pc.	Notes
1	Mediamat inlet set cpl.	55 31 001		incl. item 1.1 - 1.2
1.1	Gasket; D21 X D28 X 2,0	27 09 011		replaced by 55 31 001
1.1	Gasket; D20,5 X D28,5 X 2,0	27 01 002		replaced by 55 31 001
1.1	O-ring; 20 X 3	27 07 031		
1.2	Hose clamp; D20-30 X 12	28 02 109		
3	Hose elbow 90°; DN17X4,0;55X115	60001600		
4	Hose clamp; D20-30 X 12	28 02 109		
5	Reducing hose; DN16 X DN30; 1300	40 03 036		adapt
6	Mediamat	55 27 040		incl. item 6.1 - 6.4
6.1	Mediamat top section; ZULAUF D30; XX LG	35 01 124		
6.2	O-ring; 51 X 3	27 07 043		
6.3	Wash arm end piece clip; D2,0	28 04 041	4	
6.4	Accelerator; D75 X 169 X D4,3	35 01 035		
7	Industrial hose; DN19,4 X 3,5	40 01 016		450 mm; "By-the-metre" goods GSR 36
7	Industrial hose; DN19,4 X 3,5	40 01 016		115 mm; "By-the-metre" goods GSR 36E
8	T-hose socket; D18 X D18 X D10	29 06 502		GSR 36E
9	Industrial hose; DN19,4 X 3,5	40 01 016		160 mm; "By-the-metre" goods GSR 36E
10	Mediamat drain; G 1 1/2"; D40	35 01 080		
11	Syphon; D38 X 4,0	60002653		
12	Hose clamp; D32-52 X 12	28 02 110		
13	Syphon; D38 X 4,0	60002653		
14	Stand pipe bottom part; D87 X 50,5	62001805		
15	Gasket; D52 X D83,5 X 2,0	62001749		
16	Hexagonal nut; M5 SELBSTSICHERND	21 05 302		
17	Hexagonal nut; M14 X 1,0 X 5,0	31 25 002		
18	Gasket; D14,2 X D20 X 2,0	27 09 036		
19	Gland for thermostat; M14 X 1,0 X 15; SW19	31 25 001		
20	O-ring; 43 X 7,0	27 07 088		
21	Heating element cranked/ L 5,0kW; 230V/400V/3	31 03 089		
21	Heating element cranked/ L 5,0kW; 240V/420V/3	31 03 094		
21	Heating element cranked/ L 5,0kW; 200V/346V/3	31 03 103		
21	Heating element cranked/ L 5,0kW; 254V/440V/3	31 03 096		
22	Locking washer; D43 X D80 X 4,0	01 17 003		
23	Star bridge; 2,5QMM; 90 LG	31 23 088	2	
24	Suction sieve for pump	60001324		
25	Flat filter; 1,0 X 205 X 321	60002512	2	
26	Sieve box	60001529		
27	Flat filter; 1,0 X 201 X 347	60002511		
28	Standpipe; ÜBERLAUFHÖHE 130	62002648		
29	Ratchet nut; M5	21 01 310	6	
o.P.	HT bend; DN40; 87GRAD	30 15 505		



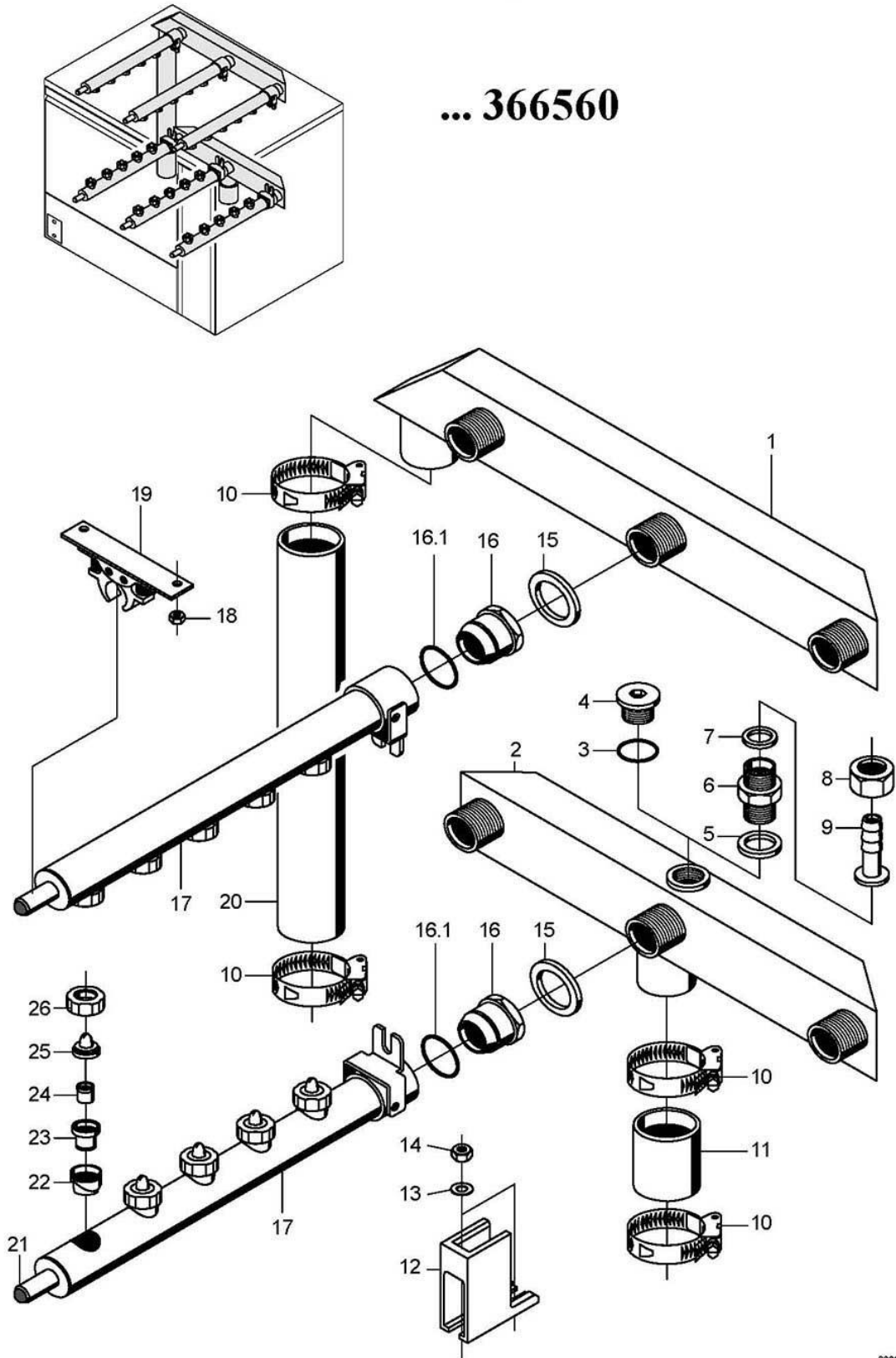
60002873-01

GSR 36, GSR 36E

Wash pump

Item.	Designation	Parts no.:	Pc.	Notes
2	Washer; D8,4 X D17 X 1,6	22 01 303		
3	Spring washer; B8	23 03 301		
4	Hexagonal nut; M8	21 01 305		
5	Suction sieve; D42 X 41 X D1,5	62001337	2	From machine no.: 366 561
6	Hose clamp; D47-67 X 12	28 02 115		
7	Reducing elbow; DN35 X DN40	60001851		
8	Pump 0,55kW 6/0; 230V/1/50HZ	31 02 363	2	incl. item 8.1 - 8.7
8	Pump 0,55kW 6/0; 200V/1/50HZ	31 02 372	2	incl. item 8.1 - 8.7
8	Pump 0,55kW 6/0; 200V/1/60HZ	31 02 373	2	incl. item 8.1 - 8.7
8	Pump 0,55kW 6/0; 230V/1/60HZ	31 02 371	2	incl. item 8.1 - 8.7
8.1	Sealing kit; 0,73/0,55/0,37 KW	80002673		incl. item 8.1.1 - 8.1.4
8.1.1	Washer; D6,4 X D12,5 X 1,6	22 01 302		
8.1.2	Spring washer; B6	23 03 300		
8.1.3	Hexagonal nut; M6 LH	21 01 309		
8.1.4	Pump housing gasket	31 02 203		
8.2	Impeller; D103	31 02 221		50 Hz
8.2	Impeller; D87; 0,55KW; 60HZ	31 02 377		60 Hz
8.3	Pump housing	31 02 200		
8.4	Sheet metal screw; ST 3,9 X 19	20 22 302		
8.5	Gasket; M8	22 08 505		
8.6	Hexagon screw; M8 X 16; A70	20 01 302		
8.7	Capacitor; 12,5 MIKRO F	31 13 028		
8.7	Capacitor; 12,5 MIKRO F; EX	31 13 003		Japan
9	Hexagonal nut; M5 SELBSTSICHERND	21 05 302		
10	Washer; D5,3 X D10 X 1,0	22 01 300		
11	Pump cover; 2,0 X 125 X 135	60001291		
12	Hexagonal nut; M4 SELBSTSICHERND	21 05 300		
13	Washer; D4,3 X D8 X 0,5	22 02 202		
14	Spacer; D5,3 X D12 X 7	22 08 513	2	
15	Terminal strip; 9-POLIG	31 09 155		

... 366560



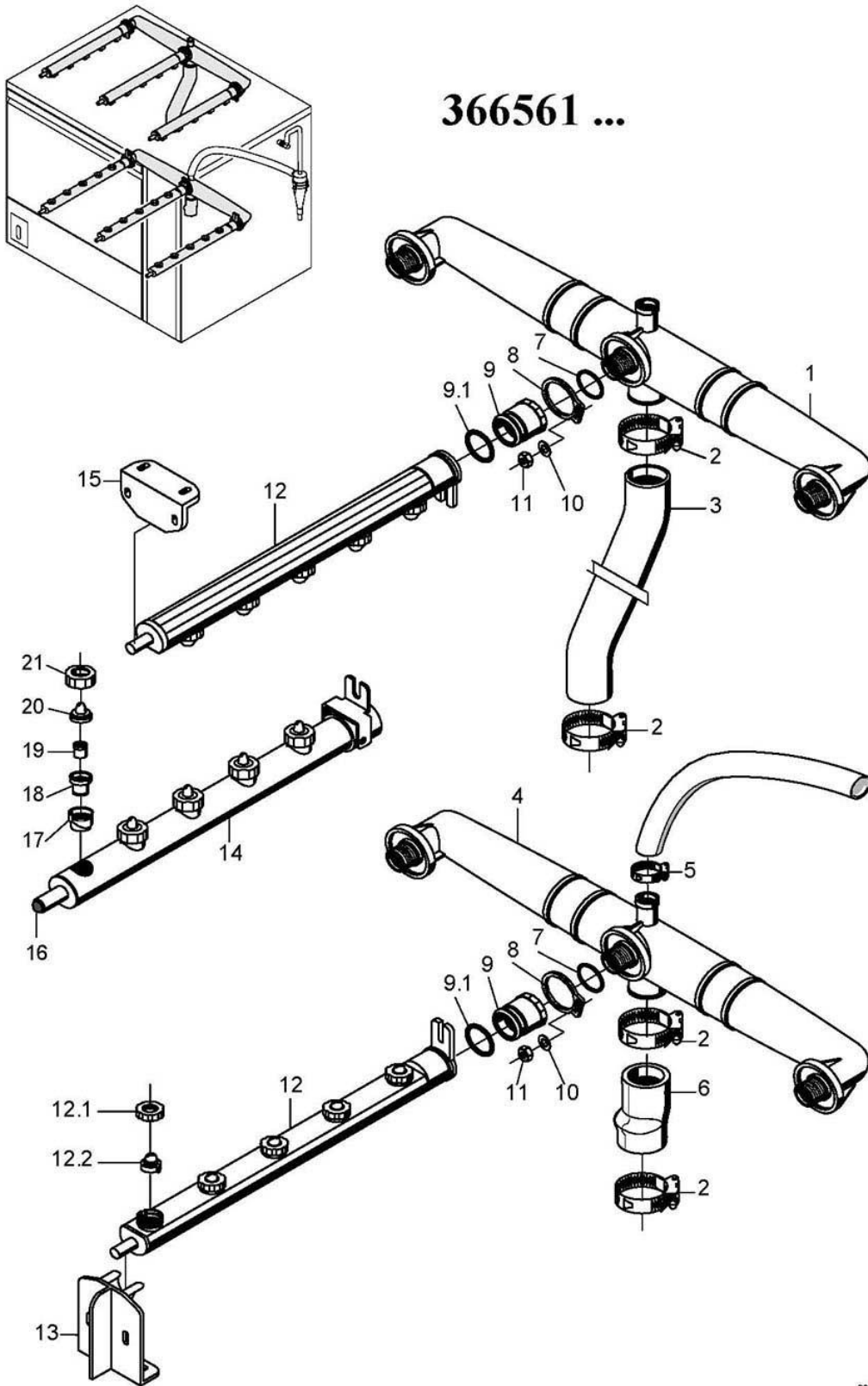
60002874-01

GSR 36, GSR 36E

Wash system to machine no.: 366 560

Item.	Designation	Parts no.:	Pc.	Notes
1	Wash manifold top	60001310		
2	Lower wash manifold	60001312		
3	O-ring; 24 X 3,0	27 07 087		Machine without Mediamat
4	Dummy plug; G 1/2" X 20,5	35 01 108		Machine without Mediamat
5	Gasket; D21 X D28 X 2,0	27 09 011		
6	Mediamat connection nipple; G 1/2" X G 3/4" X 32	30 11 502		
7	Gasket; D19,5 X D24 X 1,5	27 09 010		
8	Union nut; G 3/4" X D20,5; SW30	29 07 203		
9	Hose socket; D18 X 40; D19; D23,5	60001314		
10	Hose clamp; D47-67 X 12	28 02 115		
11	Industrial hose; DN38 X 4,0	40 02 014		67 mm; "By-the-metre" goods
12	Wash arm support, front; 23 X 59,5 X 68,5	60001648	3	
13	Washer; D5,3 X D15 X 1,2	22 05 301		
14	Hexagonal nut; M5 SELBSTSICHERND	21 05 302		
15	Gasket; D27 X D34 X 2,0	27 09 025	6	
16	Locking nut	60002810	6	incl. item 16.1
16.1	Seal ring; D26 X D32,5 X 5,0	70009122		
17	Wash arm cpl.	60002530	6	Wash arm metal; no longer deliverable ; replaced by 60002530
18	Hexagonal nut; M4	21 01 302		
19	Wash arm support	60001247		
20	Industrial hose; DN38 X 4,0	40 02 014		587 mm; "By-the-metre" goods
21	Plug for wash arm; D10 X 1	35 03 026		
22	Jet bottom part; D24 X 9	65002842		
23	Jet bottom part; G 3/4" X 18,1	65003257		
24	Bush for wash jet base; D14 X 23	60001304		
25	Slotted jet	60001519		
26	Coupling nut for wash jet; G 3/4" X D16	62001808		

366561 ...

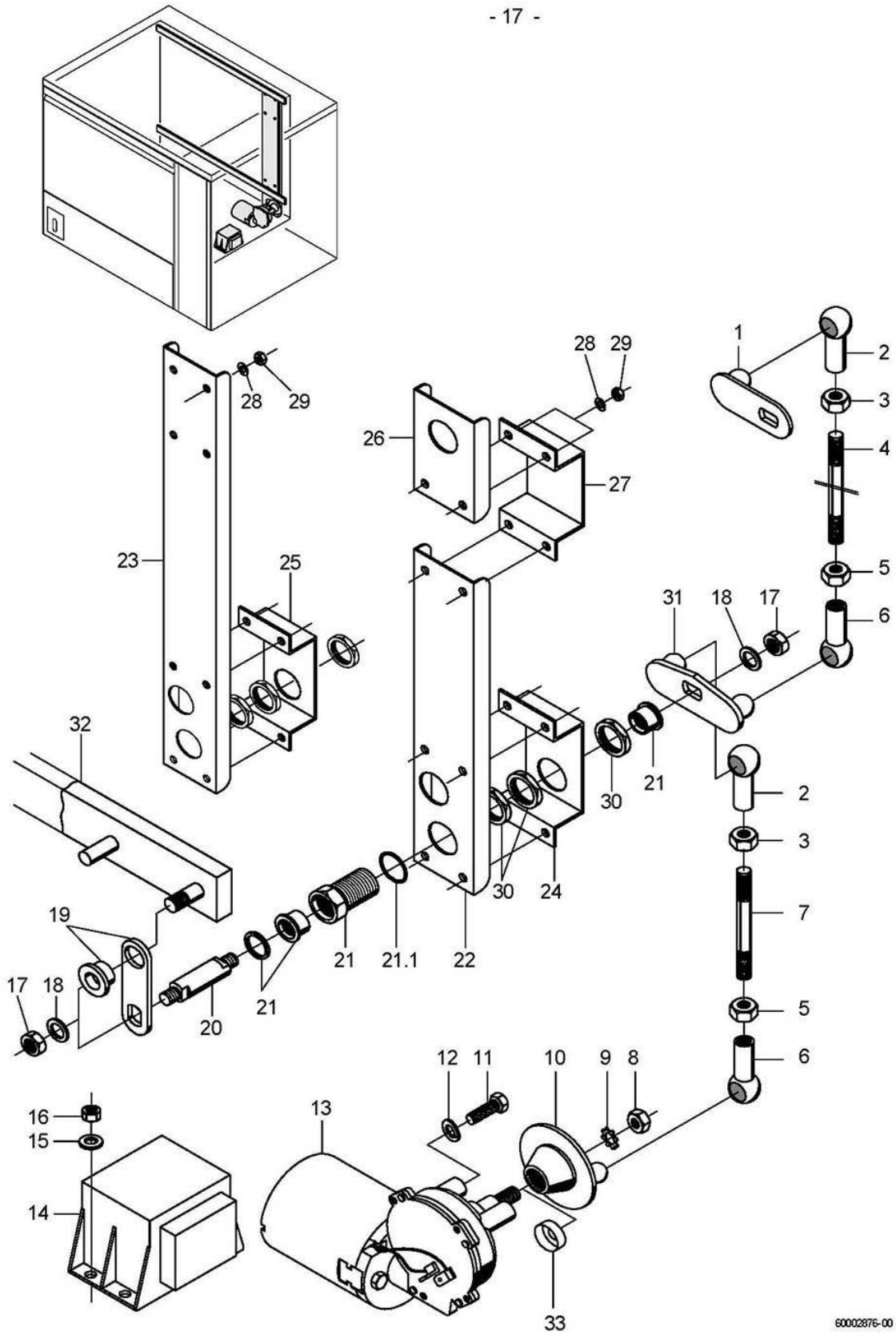


60002875-01

GSR 36, GSR 36E

Wash system From machine no.: 366 561

Item.	Designation	Parts no.:	Pc.	Notes
1	Wash manifold top	60002799		
2	Hose clamp; D24-44 X 12	28 02 309		
3	Reducing elbow, DN34 X DN38	60002539		
4	Lower wash manifold	60002798		
5	Hose clamp; D20-30 X 12	28 02 109		
6	Reducing hose; DN34 X DN38; 68	60002538		
7	O-ring; 29,5 X 4,5	27 07 008		
8	Setting washer; 5,0 X 40 X 50	60002540		
9	Locking nut cpl.	65005484		incl. item 9.1
9.1	Seal ring; D26 X D32,5 X 5,0	70009122		
10	Washer; D4,3 X D12 X 1,0	22 05 300		
11	Hexagonal nut; M4 SELBSTSICHERND	21 05 300		
12	Wash arm cpl.	60002530		incl. item 12.1 - 12.2
12.1	Coupling nut for wash jet; G 3/4" X D16	62001808		
12.2	Slotted jet	60001519		
13	Wash arm support; 59 X 64 X 67	60002523		
14	Wash arm cpl.	60002530		Wash arm metal; no longer deliverable ; replaced by 60002530
15	Door lock with magnet, short; 29 X 32 X 64	60002524		
16	Plug for wash arm; D10 X 1	35 03 026		
17	Jet bottom part; D24 X 9	65002842		
18	Jet bottom part; G 3/4" X 18,1	65003257		
19	Bush for wash jet base; D14 X 23	60001304		
20	Slotted jet	60001519		
21	Coupling nut for wash jet; G 3/4" X D16	62001808		

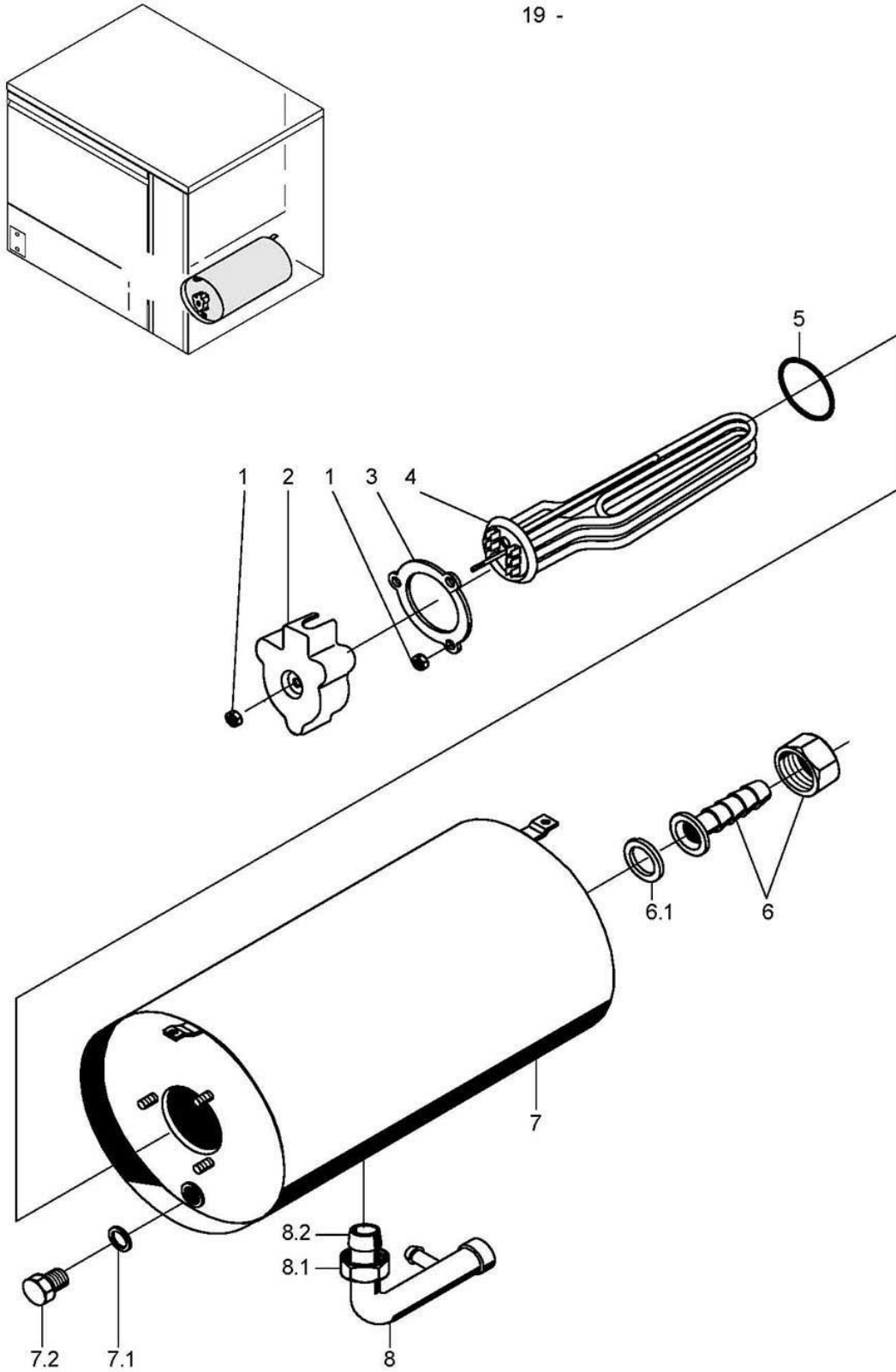


60002876-00

GSR 36, GSR 36E

Reversing From machine no.: 352 811

Item.	Designation	Parts no.:	Pc.	Notes
1	Lever	60002391		
2	Ball socket right; M8	28 05 500	2	
3	Hexagonal nut; M8	21 01 305		
4	Threaded rod; M8 X 493	60001205		
5	Hexagonal nut; M8 LH	21 01 001		
6	Ball socket left; M8-LH	28 05 501	2	
7	Threaded rod; M8 X 75	60001204		
8	Hexagonal nut; M8	21 02 303		
9	Serrated lock washer; D8,4 X D15 X 0,8	28 04 104		
10	Crank disk cpl.	60001297		
11	Hexagon screw; M6 X 16; A70	20 01 306		
12	Spring washer; B6	23 03 300		
13	Geared motor set	61006607		
14	Transformer; 230V/1/50HZ	31 15 020		
15	Washer; D4,3 X D12 X 1,0	22 05 300		
16	Ratchet nut; M5	21 01 310	2	
17	Hexagonal nut; M6 SELBSTSICHERND	21 05 304		
18	Washer; D6,4 X D12,5 X 1,6	22 01 302		
19	Reversing lever	61006181	4	
20	Reversing axle; D15 X 57,3	60002384	2	left side
20	Reversing shaft; D12 X 66,6	60002385	2	right side
21	Bearing bush cpl.	65004835	4	incl. item 21.1 - 21.3
21.1	O-ring; 26 X 2,5	27 07 062		
22	Reinforcement	60002377		to machine no.: 366 560
23	Reinforcing profile	60002645		From machine no.: 366 561
24	Pillow block; 2,0 X 62 X 195	60001325		to machine no.: 366 560
25	Pillow block; 2,0 X 62 X 127	60002506		From machine no.: 366 561
26	Reinforcement; short; 1,0 X 89 X 94	60001328		to machine no.: 366 560
27	Hoop guard; 1,0 X 62 X 146	60001327		to machine no.: 366 560
28	Washer; D5,3 X D10 X 1,0	22 01 300		
29	Hexagonal nut; M5 SELBSTSICHERND	21 05 302		
30	Hex nut; G 3/4" X 5,0; SW32	61002626	6	
31	Twin lever	60002390		
32	Connecting rod	60002372	2	
33	Radial shaft seal; D9,7 X D18 X 6	27 10 022		
o.P.	Set reversing system	55 28 224		up to mach. no. 352 810

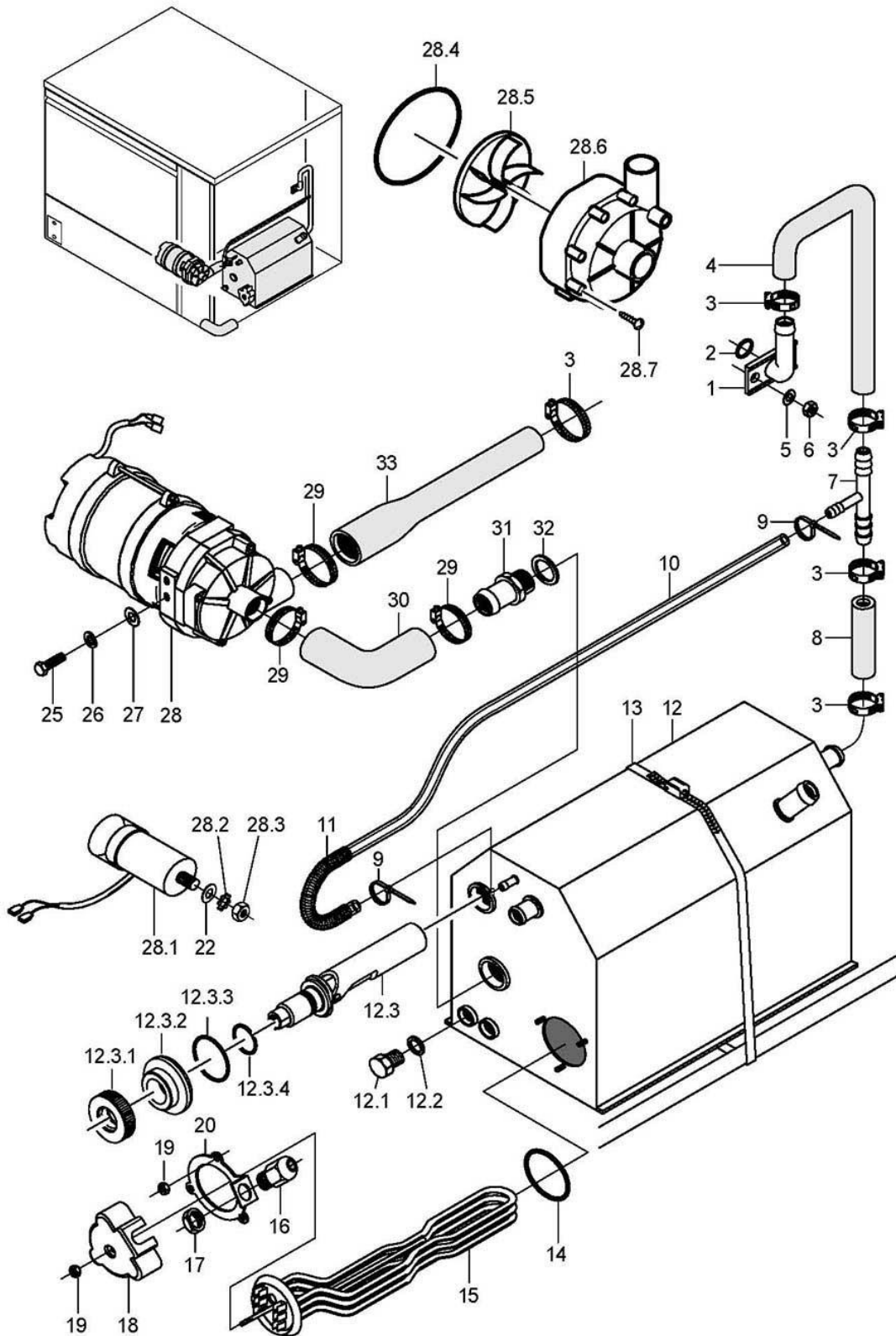


60002878-01

GSR 36, GSR 36E

Pressure boiler

Item.	Designation	Parts no.:	Pc.	Notes
1	Hexagonal nut; M5	21 01 203		
2	Element cover; 50 X D67 X 89,5	31 03 014		
3	Locking washer; D43 X D80 X 4,0	01 17 003		
4	Heating element cranked 5,0kW; 230V/400V/3	31 03 030		
4	Heating element cranked 5,0kW; 240V/420V/3	31 03 032		
4	Heating element cranked 5,0kW; 200V/346V/3	31 03 098		
4	Heating element cranked 5,0kW; 254V/440V/3	31 03 031		
5	O-ring; 43 X 7,0	27 07 088		
6	Hose coupling; R 3/4" X 1/2"	60002453		incl. item 6.1
6.1	Gasket; D16 X D24 X 3,0	80002241		
7	Boiler; 5 KW	55 12 033		incl. item 7.1 – 7.2
7.1	Gasket; D10 X D18 X 1,5	27 03 003		
7.2	Hexagon screw; M10 X 16; A70	20 01 352		
8	Boiler inlet elbow	55 09 055		incl. item 8.1 - 8.2
8.1	Union nut; G 1/2" X D12,2; SW24	29 07 201		
8.2	Cutting ring; D12 X 10	29 07 300		



GSR 36, GSR 36E

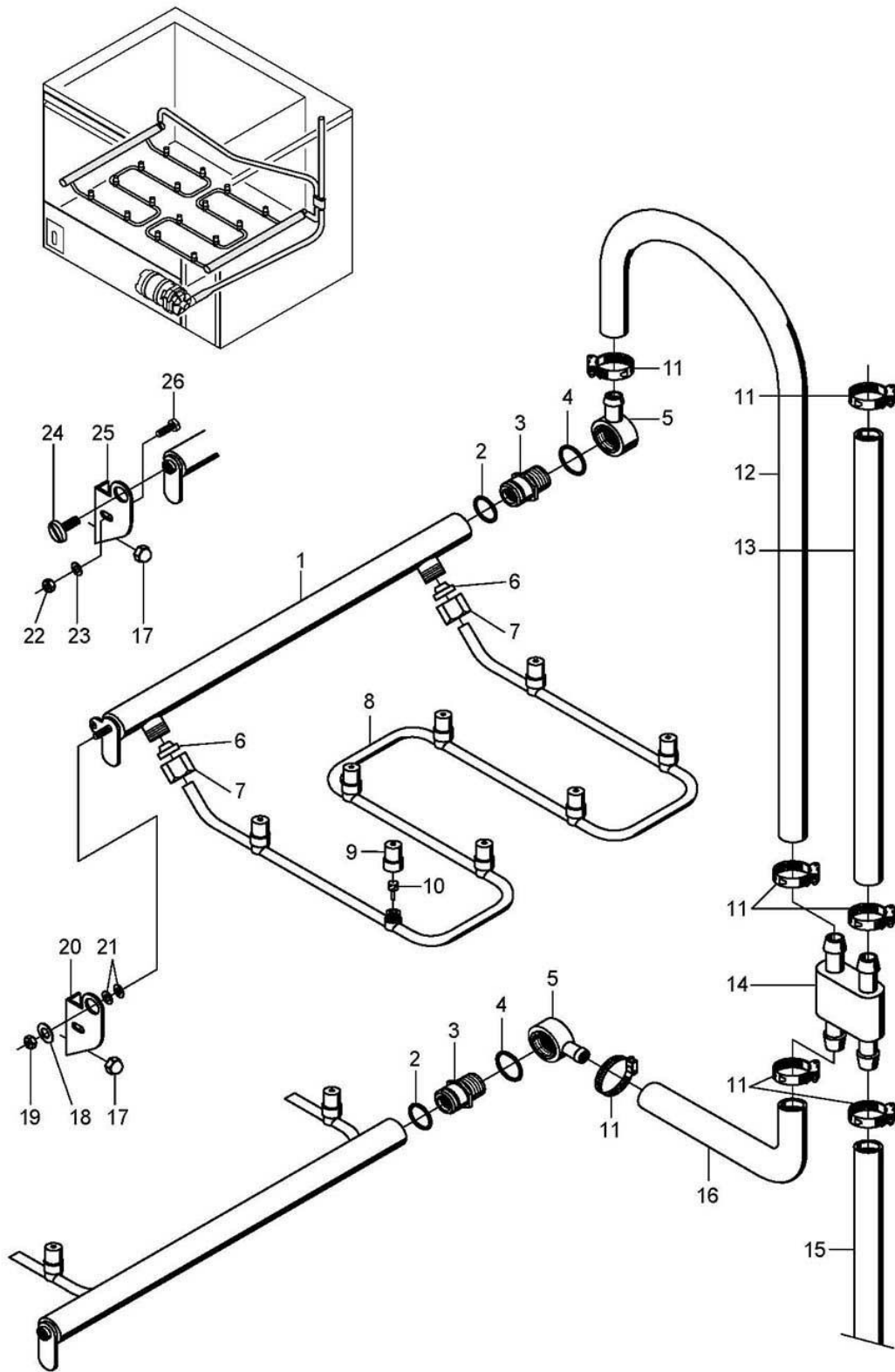
Pressure-independent boiler

Item.	Designation	Parts no.:	Pc.	Notes
1	Deaeration; DN13	61003425		
2	O-ring; 13 X 2,5	27 07 019		
3	Hose clamp; D12-22 X 9	28 02 105		
4	Hose elbow 90°; DN12,5X4,0;40X1400	60001610		adapt
5	Washer; D5,3 X D10 X 1,0	22 01 300		
6	Ratchet nut; M5	21 01 310	2	
7	T-piece; D6,6 X D14 X D14	35 01 086		
8	Industrial hose; DN13 X 3,5	40 02 035		300 mm; "By-the-metre" goods
9	Cable tie; 100 X 2,5	31 20 175		
10	Hose; DN5 X 1,5	40 01 024		700 mm; "By-the-metre" goods
11	Spring; D0,8 X D110 X 280	62002419		
12	Pressureless boiler	80002125		incl. item 12.1 - 12.3
12.1	Hexagon screw; M10 X 16; A70	20 01 352		
12.2	Gasket; D10 X D18 X 1,5	27 03 003		
12.3	Floating switch installation set	55 28 255		incl. item 12.3.1 - 12.3.4
12.3.	Nut; M14 X 2, D26,8 X 8	60003989		
12.3.	Ring; D14,3 X D32 X 11	60003872		
12.3.	O-ring; 23 X 3,5	27 07 093		
12.3.	O-ring; 11,11 X 1,78	27 07 079		
13	Hose clamp; D50-215 X 12	28 02 126		to machine no.: 364 039
14	O-ring; 43 X 7,0	27 07 088		
15	Heating element cranked 5,0kW; 230V/400V/3	31 03 030		
15	Heating element cranked 5,0kW; 240V/420V/3	31 03 032		
15	Heating element cranked 5,0kW; 200V/346V/3	31 03 098		
15	Heating element cranked 5,0kW; 254V/440V/3	31 03 031		
16	Cable gland; PG13,5; 6-12 MM; IP68	31 10 040		
17	Hexagonal nut; PG13,5	31 10 041		
18	Element cover; 50 X D67 X 89,5	31 03 014		
19	Hexagonal nut; M5	21 01 203		
20	Clamping plate; D43 X D80 X 4,0	55 19 018		
22	Washer; D8,4 X D17 X 1,6	22 01 303		
25	Hexagon screw; M6 X 16; A70	20 01 306		
26	Spring washer; B6	23 03 300		
27	Washer; D6,4 X D12,5 X 1,6	22 01 302		
28	Pump 0.270 kW 8/0; 220/240V/1/50HZ	31 02 477		Repair recommended only for pump housings with 7 screws
28	Pump 0.270 kW 8/0; 220/240V/1/60HZ	31 02 445		Repair recommended only for pump housings with 7 screws
28	Pump 0.270 kW 8/0; 200V/1/50HZ	31 02 446		Repair recommended only for pump housings with 7 screws
28	Pump 0.270 kW 8/0; 200V/1/60HZ	31 02 447		Repair recommended only for pump housings with 7 screws
28.1	Capacitor; 5 MIKRO F	31 13 099		
28.2	Spring washer; B8	23 03 301		
28.3	Hexagonal nut; M8	21 01 305		
28.4	Cord; D=78 X 3; SHOR 50-55;	40 04 023		
28.5	Pump impeller; FÜR UP60/UP30 MIT 50HZ	31 02 466		
28.5	Pump impeller, installed; FÜR UP60 MIT 60HZ	31 02 587		
28.6	Pump housing; D=80,5MM	31 02 519		
28.7	Screw for pump housing	31 01 118	7	
29	Hose clamp; D24-36 X 12	28 02 111		
30	Hose elbow 90°; DN25X4,0;40X50	60001607		
31	Hose nipple; D26 X 41; G 1/2"; SW27	80001403		
32	Gasket; D21 X D28 X 2,0	27 09 011		
33	Reducing hose; DN13 X DN25; 720	60001606		adapt

GSR 36, GSR 36E

Bottom rinse system to machine no.: 366 710

Item.	Designation	Parts no.:	Pc.	Notes
1	Rack pipe left	60002675		up to machine no. 376 755 you have to order items 17-20
1	Rack pipe right	60002676		up to machine no. 376 755 you have to order items 17-20
2	O-ring; 16 X 2	27 07 059	2	
3	Threaded nipple; G 3/8" X 29; SW22	60001305	2	
4	O-ring; 16 X 2,5	27 07 001	2	
5	Connection nipple; G3/8" X 29; SW22	60002659	2	
6	Cutting ring; D13 X 10; DN10	29 07 303	4	
7	Union nut; G 3/8" X D10,2; SW22	29 07 200	4	
8	Rinse pipe bottom cpl.	60002411	2	
9	Spray jet cap; D14,6 X 21	65002765	16	
10	Spray jet swirl; D8 X 18,8	65002764	16	
11	Hose clamp; D12-22 X 9	28 02 105		
12	Industrial hose; DN13 X 3,5	40 02 035	2	430mm; "By-the-metre" goods
13	Industrial hose; DN13 X 3,5	40 02 035		830 mm; "By-the-metre" goods
14	Manifold cpl.	60001210		
15	Y-hose socket; D13	29 06 526		
16	Cap nut; M5	21 10 303		
17	Washer; D5,3 X D15 X 1,2	22 05 301		From machine no.: 376 756
18	Hexagonal nut; M5 SELBSTSICHERND	21 05 302		From machine no.: 376 756
19	Pipe support left	60002677		From machine no.: 376 756
19	Pipe support right	60002679		From machine no.: 376 756
20	Washer; D5,3 X D10 X 1,0	22 01 300		From machine no.: 376 756
21	Hexagonal nut; M6 SELBSTSICHERND	21 05 304		to machine no.: 376 755
22	Spring washer; B6	23 03 300		to machine no.: 376 755
23	Bolt for pulley; M6 X 15; KOPF D18	61002332	2	to machine no.: 376 755
24	Pipe support right; 1,5 X 61,5 X 81,5	60001366		to machine no.: 376 755
24	Pipe support left; 1,5 X 61,5 X 81,5	60001436		to machine no.: 376 755
25	Lens head screw; M6 X 8	20 10 311		to machine no.: 376 755

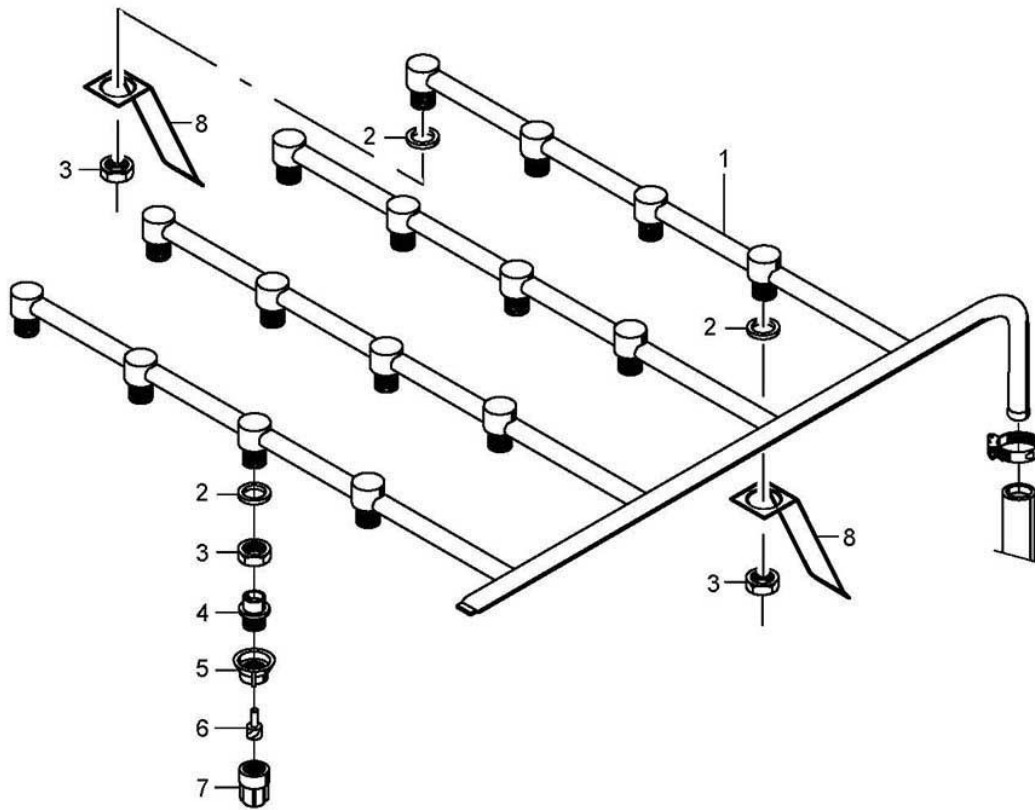
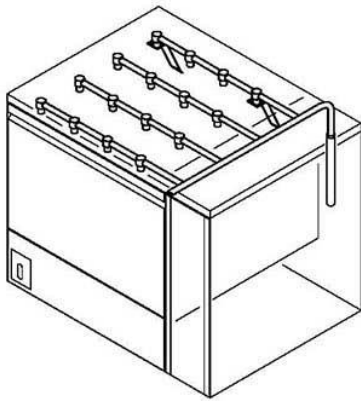


60002881-00

GSR 36, GSR 36E

Bottom rinse system From machine no.: 366 711

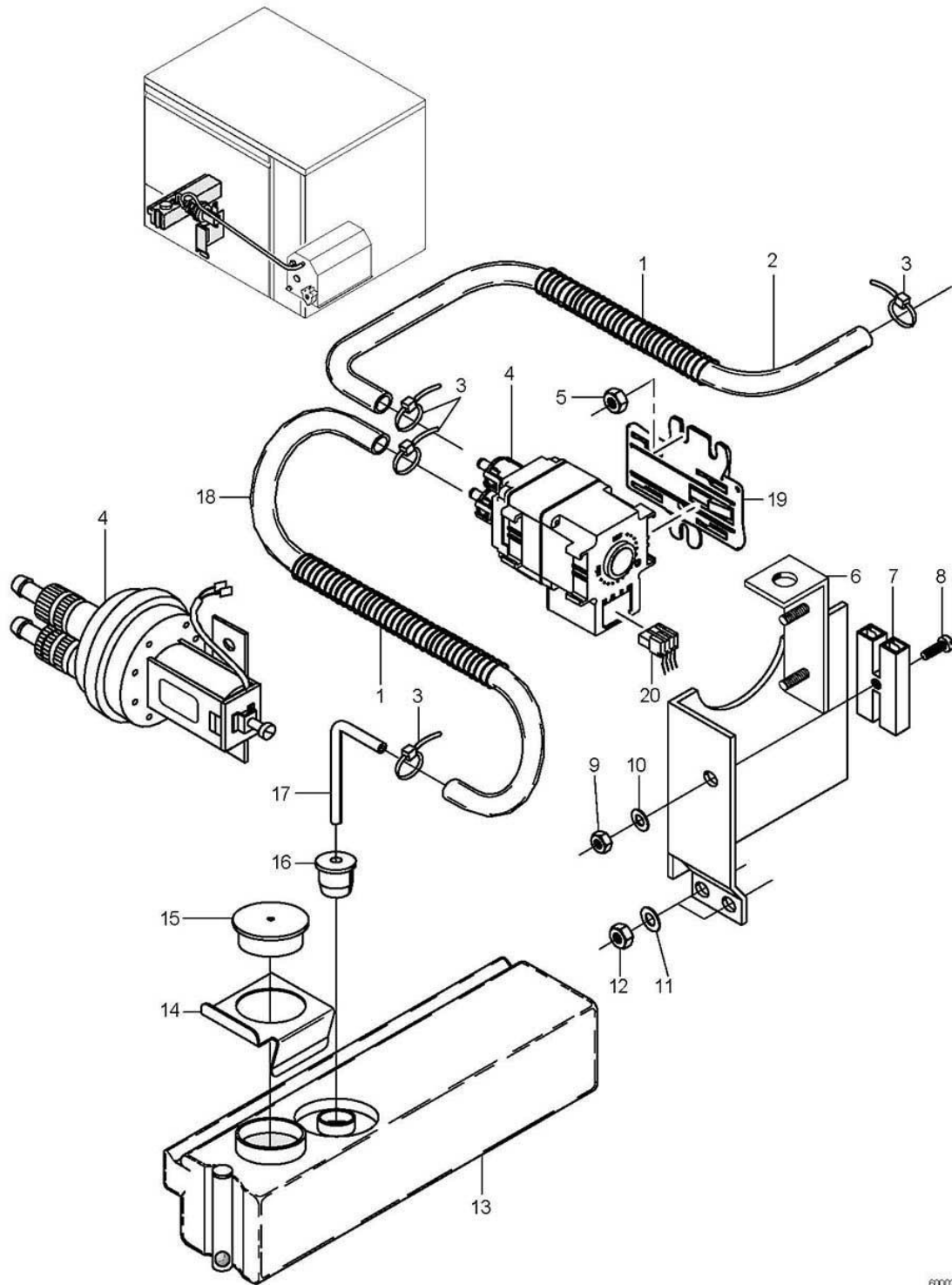
Item.	Designation	Parts no.:	Pc.	Notes
1	Rack pipe left	60002675		up to machine no. 376 755 you have to order items 18-21
1	Rack pipe right	60002676		up to machine no. 376 755 you have to order items 18-21
2	O-ring; 16 X 2	27 07 059	2	
3	Threaded nipple; G 3/8" X 29; SW22	60001305	2	
4	O-ring; 16 X 2,5	27 07 001	2	
5	Connection nipple; G3/8" X 29; SW22	60002659	2	
6	Cutting ring; D13 X 10; DN10	29 07 303	4	
7	Union nut; G 3/8" X D10,2; SW22	29 07 200	4	
8	Rinse pipe bottom cpl.	60002411	2	
9	Spray jet cap; D14,6 X 21	65002765	16	
10	Spray jet swirl; D8 X 18,8	65002764	16	
11	Hose clamp; D12-22 X 9	28 02 105		
12	Industrial hose; DN13 X 3,5	40 02 035		930 mm; "By-the-metre" goods
13	Industrial hose; DN13 X 3,5	40 02 035		310 mm; "By-the-metre" goods
14	Distributor for rinse manifold	62001391		
15	Reducing hose; DN13 X DN25; 720	60001606		Pressure-independent boiler
15	Hose elbow 90°; DN12,5X4,0;45X880	62001434		Pressure boiler
16	Hose bend; DN13 X 4,0	40 03 053		
17	Cap nut; M5	21 10 303		
18	Washer; D5,3 X D15 X 1,2	22 05 301		From machine no.: 376 756
19	Hexagonal nut; M5 SELBSTSICHERND	21 05 302		From machine no.: 376 756
20	Pipe support left	60002677		From machine no.: 376 756
20	Pipe support right	60002679		From machine no.: 376 756
21	Washer; D5,3 X D10 X 1,0	22 01 300		From machine no.: 376 756
22	Hexagonal nut; M6 SELBSTSICHERND	21 05 304		to machine no.: 376 755
23	Spring washer; B6	23 03 300		to machine no.: 376 755
24	Bolt for pulley; M6 X 15; KOPF D18	61002332	2	to machine no.: 376 755
25	Pipe support right; 1,5 X 61,5 X 81,5	60001366		to machine no.: 376 755
25	Pipe support left; 1,5 X 61,5 X 81,5	60001436		to machine no.: 376 755
26	Lens head screw; M6 X 8	20 10 311		to machine no.: 376 755



GSR 36, GSR 36E

Rinse system top

Item.	Designation	Parts no.:	Pc.	Notes
1	Top rinsing manifold cpl.	60002409		
2	Gasket; D17 X D24 X 2,0	62001366	16	
3	Hexagonal nut; G 3/8" X 5,5; SW22	30 09 200	16	
4	Nipple; M11 X 1,0 X 16; D14,5	60001555	16	
5	Union nut; G 3/8"; D34 X 15	62001174	16	
6	Spray jet swirl	65002755	16	
7	Rinse jet cap	65002754	16	
8	Deflector plate; 0,8 X 35 X 135,5	60002765	2	retrofitable

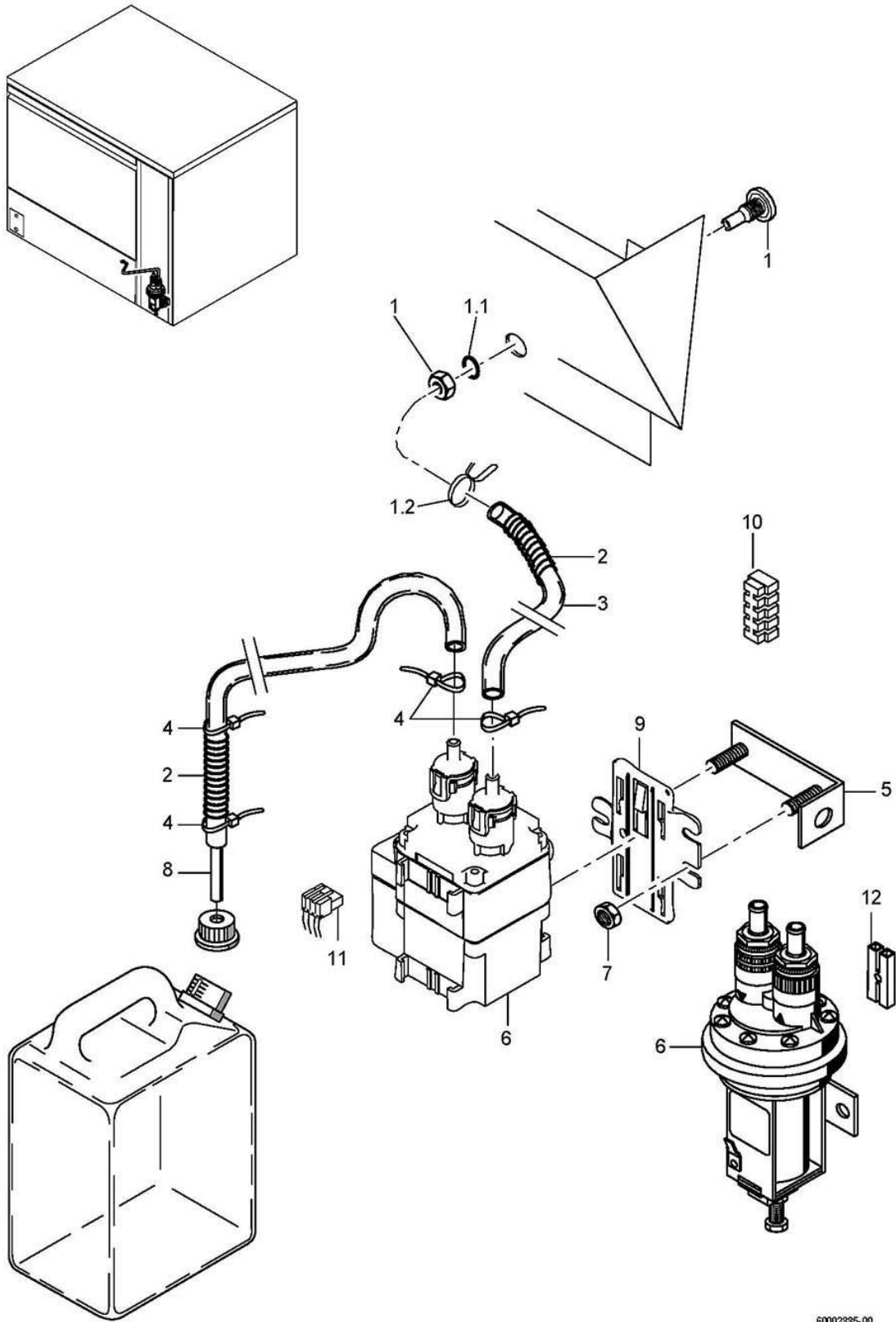


60002884.00

GSR 36, GSR 36E

Rinse aid dosing

Item.	Designation	Parts no.:	Pc.	Notes
1	Spring; D0,8 X DI10 X 280	62002419		
2	Hose; DN5 X 1,5	40 01 024		650 mm; "By-the-metre" goods
3	Wire hose clamp; D8,6 X 1	28 02 348		
4	ELT 10 replacement set	55 28 278		
5	Hexagonal nut; M4 SELBSTSICHERND	21 05 300		
6	Guard angle	60002410		to machine no.: 366 560
6	Elbow	60001221		From machine no.: 366 561
7	Coupler piece, insulated; 250V;20AWG;25A;2-POLIG	31 12 021		
8	Cylinder head screw; M3 X 16	20 09 205		
9	Hexagonal nut; M3	21 01 201		
10	Washer; D3,2 X D6 X 0,5	22 02 201		
11	Washer; D5,3 X D10 X 1,0	22 01 300		
12	Hexagonal nut; M5 SELBSTSICHERND	21 05 302		
13	Rinse aid container	60001805		
14	Handle; 1,0 X 80 X 89,6	60001216		to machine no.: 366 560
15	Protective cap	60002216		
16	Reducing bush; D30 X 25	40 06 011		
17	Suction pipe; D6 X 1,0 X 97	60001933		
18	Hose; DN5 X 1,5	40 01 024		700 mm; "By-the-metre" goods
19	Bracket; 75 X 82,5	80002906		
20	Macro-module plug; RAST5;4-POLIG UNCOD.	31 12 094		

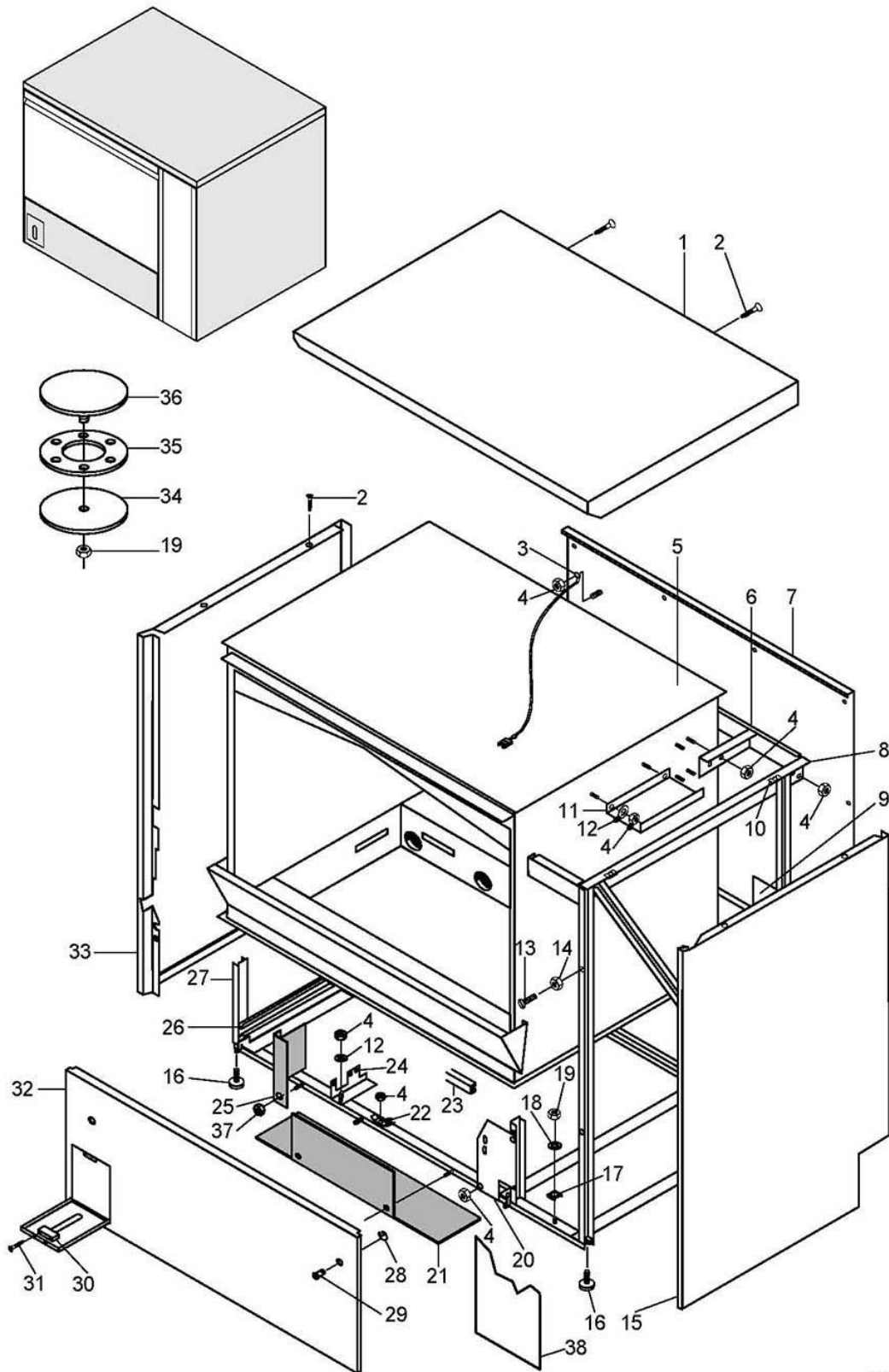


60002885-00

GSR 36, GSR 36E

Detergent dosing

Item.	Designation	Parts no.:	Pc.	Notes
1	Dosing nipple set, M10 X 29; SW5	61005883		incl. item 1.1 - 1.2
1.1	O-ring; 10 X 2,5	27 07 030		
1.2	Wire hose clamp; D8,6 X 1	28 02 348		
2	Spring; D0,8 X DI10 X 280	62002419	2	
3	Hose; DN5 X 1,5	40 01 024		500 mm; "By-the-metre" goods
4	Wire hose clamp; D8,6 X 1	28 02 348		
5	Elbow	60001221		
6	ELT 10 replacement set	55 28 278		
7	Hexagonal nut; M5 SELBSTSICHERND	21 05 302		
8	Suction stick cpl.	55 25 051		
9	Bracket; 75 X 82,5	80002906		
10	Binding post; 5-POLIG; 6QMM; 56,5LG	31 09 230		
11	Macro-module plug; RAST5;4-POLIG UNCOD.	31 12 094		
12	Coupler piece, insulated; 250V;20AWG;25A;2-POLIG	31 12 021		
o.P.	Set ELT 10 detergent dosing	55 28 216		GSR 36E
o.P.	Set ELT 10 detergent dosing	55 28 188		GSR 36
o.P.	Cable dosing pump; 3 X 0,75QMM; 970 LG	60001215		

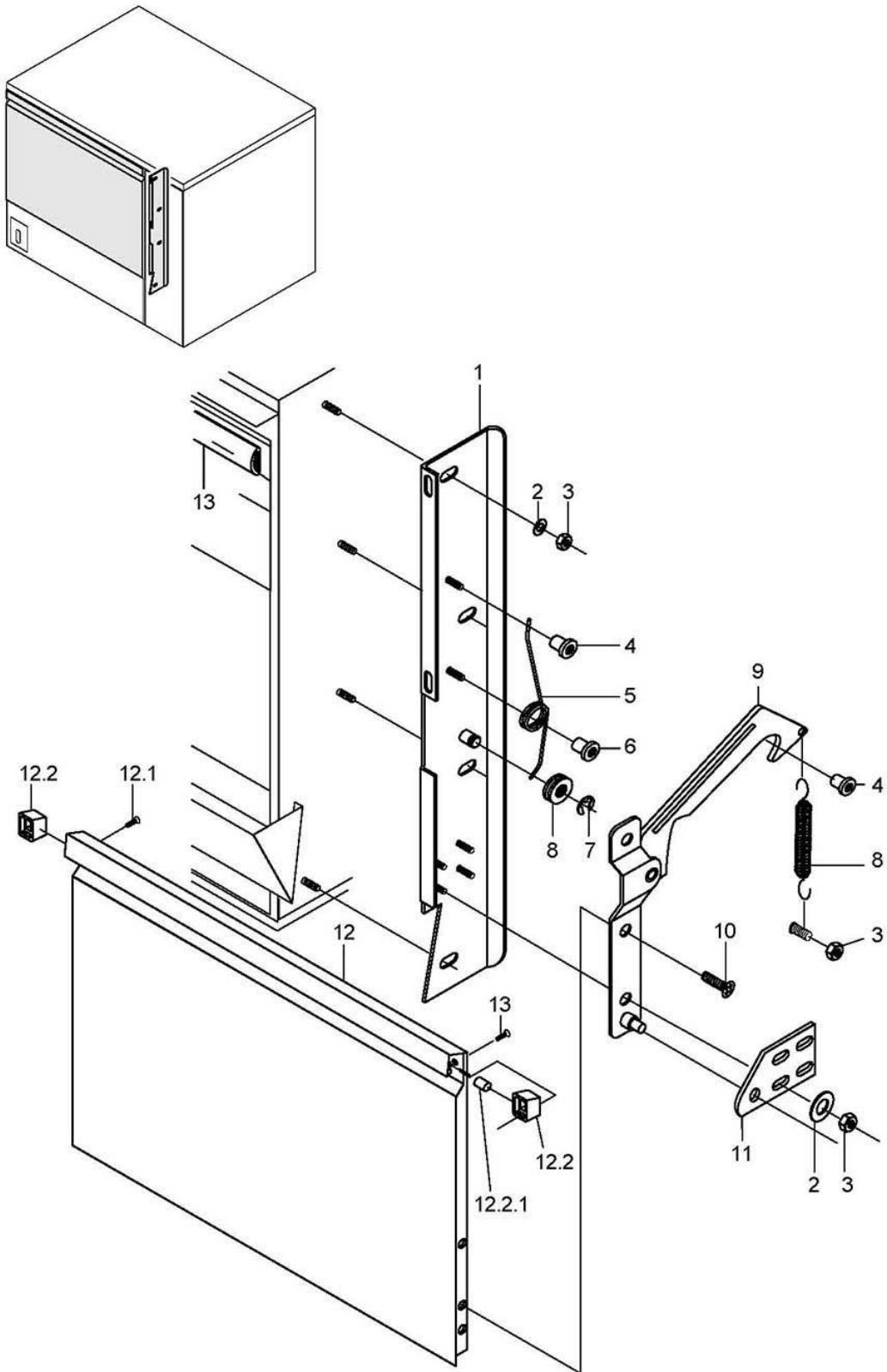


60002886-00

GSR 36, GSR 36E

Chassis, container and panelling

Item.	Designation	Parts no.:	Pc.	Notes
1	Cover plate; 0,8 X 738,6 X 962,6	60001644		to machine no.: 366 560
1	Cover plate; 0,8 X 738,4 X 929	60002564		From machine no.: 366 561
2	Plate screw; ST 3,9 X 13	20 21 302		
3	Set of protection wires	60001276		
4	Hexagonal nut; M5 SELBSTSICHERND	21 05 302		
5	Housing cpl.	60001270		
6	Angel; rear	60002398		to machine no.: 366 560
6	Angel; rear	60002609		From machine no.: 366 561
7	Sheating rear; 0,8 X 815,4 X 855	60001502		to machine no.: 366 560
7	Rear panel	60002622		From machine no.: 366 561
8	Side frame	60001279		to machine no.: 366 560
8	Side frame	60002614		From machine no.: 366 561
9	Guard plate; 1,0 X 130 X 260	60001612		
10	Sheet metal nut; B 3,9	21 17 002		
11	U-profile; 1,0 X 108,2 X 180	60002643		
12	Washer; D5,3 X D10 X 1,0	22 01 300		
13	Pan head screw; M4 X 45	20 10 328		
14	Hexagonal nut; M4	21 01 202		
15	Housing panel right; 0,8 X 675,4 X 828,4	60001642		
15	Housing panel right	60002617		
16	Adjustable foot; M8 X 60; SW24	62001973		
17	Clamp strap; 1,8 X 14 X 26,07	31 09 095		
18	Washer; D6,4 X D12,5 X 1,6	22 01 302		
19	Hexagonal nut; M6 SELBSTSICHERND	21 05 304		
20	Gusset plate; 1,0 X 145 X 165	60001290		
21	Splash guard; 2,0 X 205 X 567	60002529		
22	Flat plug; 6,3 X 0,8; D5,2	31 12 003		
23	Edge protection; 5,5 X 8,0 X 700	60001190		
24	Solenoid valve bracket; 1,25 X 65,5 X 117	60001218		
25	Safety cover; 2,0 X 133 X 133	60002561		
26	Guide rail; 1,0 X 68,5 X 495,5	60001833		
27	Base frame	60001278		
28	Clipse; D6 X 1,0	71002952	2	
29	Thread cap; M4 X D12; 13,5 LG	28 14 331	2	
30	Magnet catch	28 05 044		
31	Countersunk screw; M3 X 16	20 08 205	2	
32	Panel front	60002637		
33	Panel left cpl.; 0,8 X 675,4 X 828,4	60001634		to machine no.: 366 560
33	Panel left cpl.; 0,8 X 675,4 X 841,6	60002618		From machine no.: 366 561
34	Cover; 2,0 X 80,5 X 80,5	60001170		GSR 36
35	Gasket; D52 X D83,5 X 2,0	62001749		GSR 36
36	Cover; 2,0 X 83 X 83	60001228		GSR 36
37	Ratchet nut; M5	21 01 310		
38	Insulating foil; 0,25 X 133 X 339,5	31 14 095		retrofitable

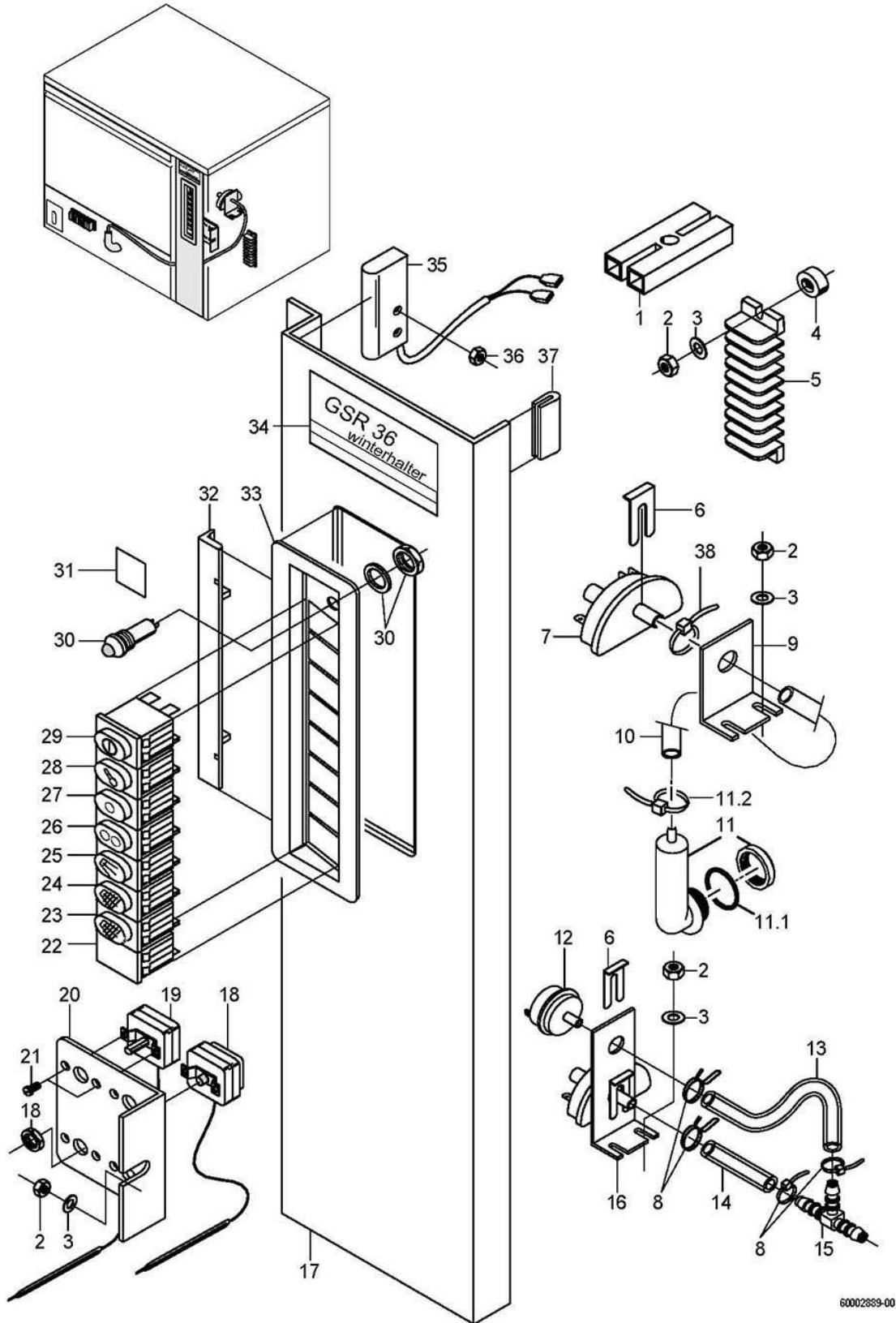


60002887-00

GSR 36, GSR 36E

Door

Item.	Designation	Parts no.:	Pc.	Notes
1	Door suspension right	60002658		to machine no.: 366 560
1	Door suspension right cpl.; 550 LG	60002496		From machine no.: 366 561
1	Door suspension left	60001345		
2	Washer; D5,3 X D10 X 1,0	22 01 300		
3	Hexagonal nut; M5 SELBSTSICHERND	21 05 302		
4	Buffer; D20 X 8	62001433	4	
5	Tension spring right; LO13,95; DA18; D3	62001189		
5	Tension spring left; LO13,95; DA18; D3	62001190		
6	Pivot bearing f/tension spring; D20 X 14	62001191	2	
7	Locking disk; D6 X 0,7	23 10 304	2	
8	Set door lever roller gsr36	55 28 222		for both sides
9	Door brace left	60001631		
9	Door brace right	60001632		
10	Countersunk screw; M5 X 10	20 12 301		
11	Plate; 3,0 X 40 X 80	60001432	2	
12	Door cpl.	60001267		incl. item 12.1 - 12.2
12.1	Plate screw; ST 3,9 X 13	20 21 302		
12.2	Handle corner cpl.	60002738		
12.2.	Magnet; D10 X 10	31 24 191		
13	Profile gasket; 10 X 4,0	62001618		690 mm; "By-the-metre" goods
o.P.	Silicone adhesive Elastosil E43; 90 ML	34 03 012		for profile seal

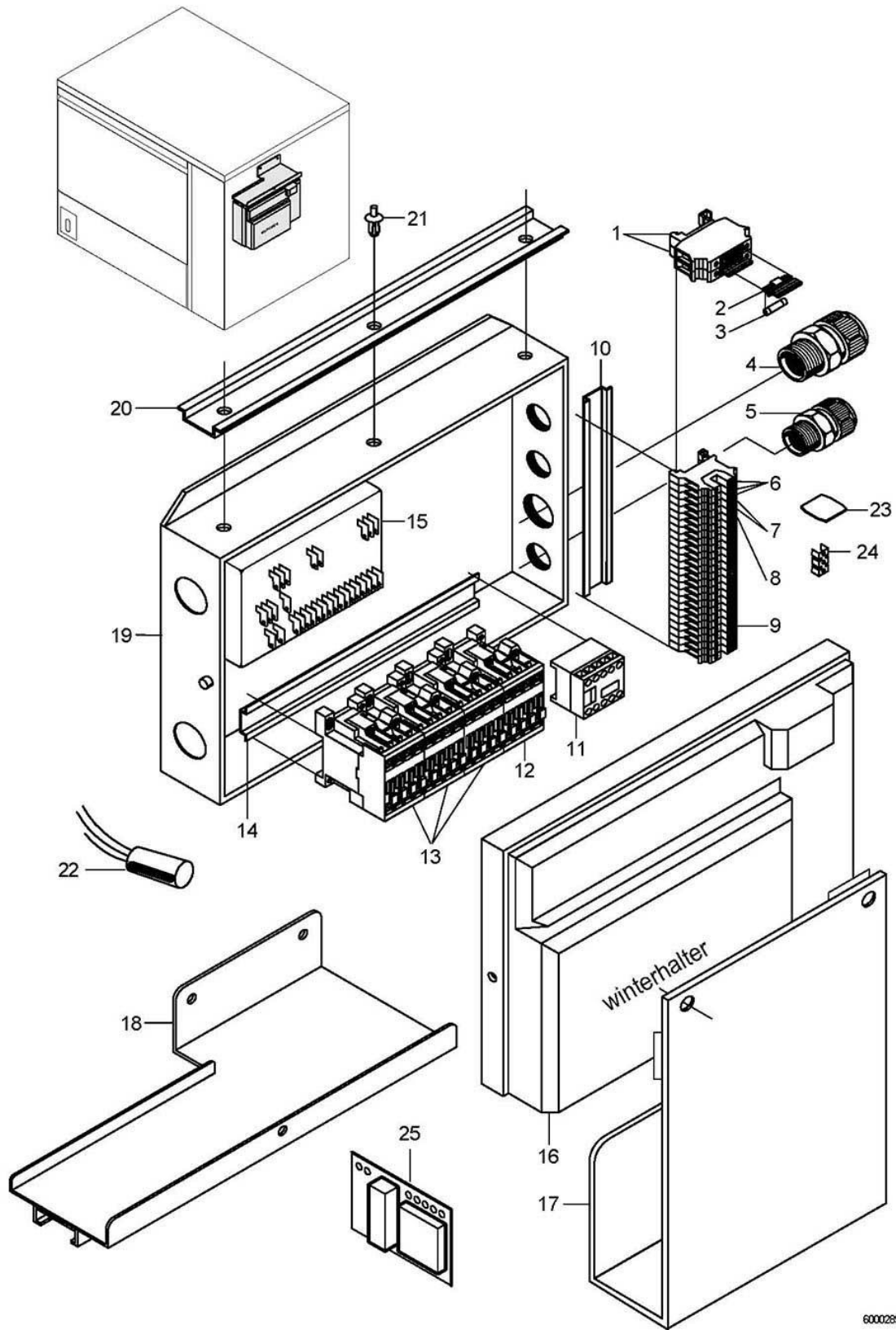


60002889-00

GSR 36, GSR 36E

Electrical parts I

Item.	Designation	Parts no.:	Pc.	Notes
1	Coupler piece, insulated; 250V;20AWG;25A;2-POLIG	31 12 021		
2	Hexagonal nut; M4 SELBSTSICHERND	21 05 300		
3	Washer; D4,3 X D8 X 0,5	22 02 202		
4	Spacer; D5,3 X D12 X 7	22 08 513	2	
5	Terminal strip; 9-POLIG	31 09 155	2	
6	Retaining spring for leveller	31 26 001		
7	Level control; 250V/50-60HZ	31 26 039		
8	Wire hose clamp; D8,6 X 1	28 02 348	2	
9	Level control bracket; 1,25 X 50 X 75	61002345		
10	Hose; DN5 X 1,5	40 01 024		700 mm; "By-the-metre" goods
11	Air chamber set	60003525		incl. item 11.1 - 11.2
11.1	O-ring	30000196		
11.2	Cable tie; 100 X 2,5	31 20 175		
12	Level switch; 250V/50-60HZ	31 26 043		additional at GSR 36E with drain pump
12	Set safety level switch	55 28 242		additional at GSR 36E with drain pump
13	Hose; DN5 X 1,5	40 01 024		100 mm; "By-the-metre" goods
14	Hose; DN5 X 1,5	40 01 024		50 mm; "By-the-metre" goods
15	T-hose socket; D6	29 06 516		additional at GSR 36E with drain pump
16	Bracket; 1,25 X 50 X 130	60002734		additional at GSR 36E with drain pump
17	Front panel right	60001223		to machine no.: 366 560
17	Front panel right	60002568		From machine no.: 366 561
18	Safety thermostat; 160 GRAD C -12K "AUS"	31 25 030	2	
19	Thermostat; 1750 LG; 220V	31 25 013	2	
20	Thermostat bracket; 1,0 X 56 X 98	62001859		
21	Countersunk screw; M4 X 8	20 10 309		
22	Blind cover	31 24 187		
23	Pressure key "rinse cold"; 220V; AC; 1-POL/W;IP54	31 24 197		
24	Pressure key "manual rinsing"; 250V; AC; 2-POL; IP54	31 24 129		
25	Pressure switch "manual wash"; 250V; AC; 2-POL; IP54	31 24 205		
26	Pressure key "Programme II"; 250V; AC; 1-POL; IP54	31 24 130		
27	Pressure key "Programme I"; 250V; AC; 1-POL; IP54	31 24 153		
28	Lamp with extinction resistor; 230V; IP54	31 08 116		
29	Pressure switch "ON/OFF" - "V"; 250V; AC; 2-POL; IP54	31 24 186		to machine no.: 366 560
29	Pressure switch "ON/OFF" - "H"; 250V; AC; 2-POL; IP54	31 24 185		From machine no.: 366 561
30	LED red; 12V; 30MA	31 08 111		
30	LED yellow; 12V; 30MA	31 08 112		Additional equipment
31	Plate REG; 0,4 X 10,5 X 10,5	60002521		
31	Plate DOS; 0,4 X 10,5 X 10,5	60002520		Additional equipment
32	Fixing profile for screen; 12,8 X 20 X 201	61004234		From machine no.: 366 561
33	Screen; 13,92 X 73,37 X 254	61004233		From machine no.: 366 561
34	Plate GSR 36; 0,4 X 47 X 92	60001213		
34	Plate GSR 36E; 0,4 X 47 X 92	60002381		
35	Magnetic switch; 180-265V AC 50/60HZ	31 24 221		
36	PT screw; KB 50 X 10	20 17 304		to machine no.: 386 186
36	Hexagonal nut; M4 SELBSTSICHERND	21 05 300		From machine no.: 386 187
37	Edge protection; 5,5 X 8,0 X 100	62001957		From machine no.: 386 187
38	Cable tie; 100 X 2,5	31 20 175		

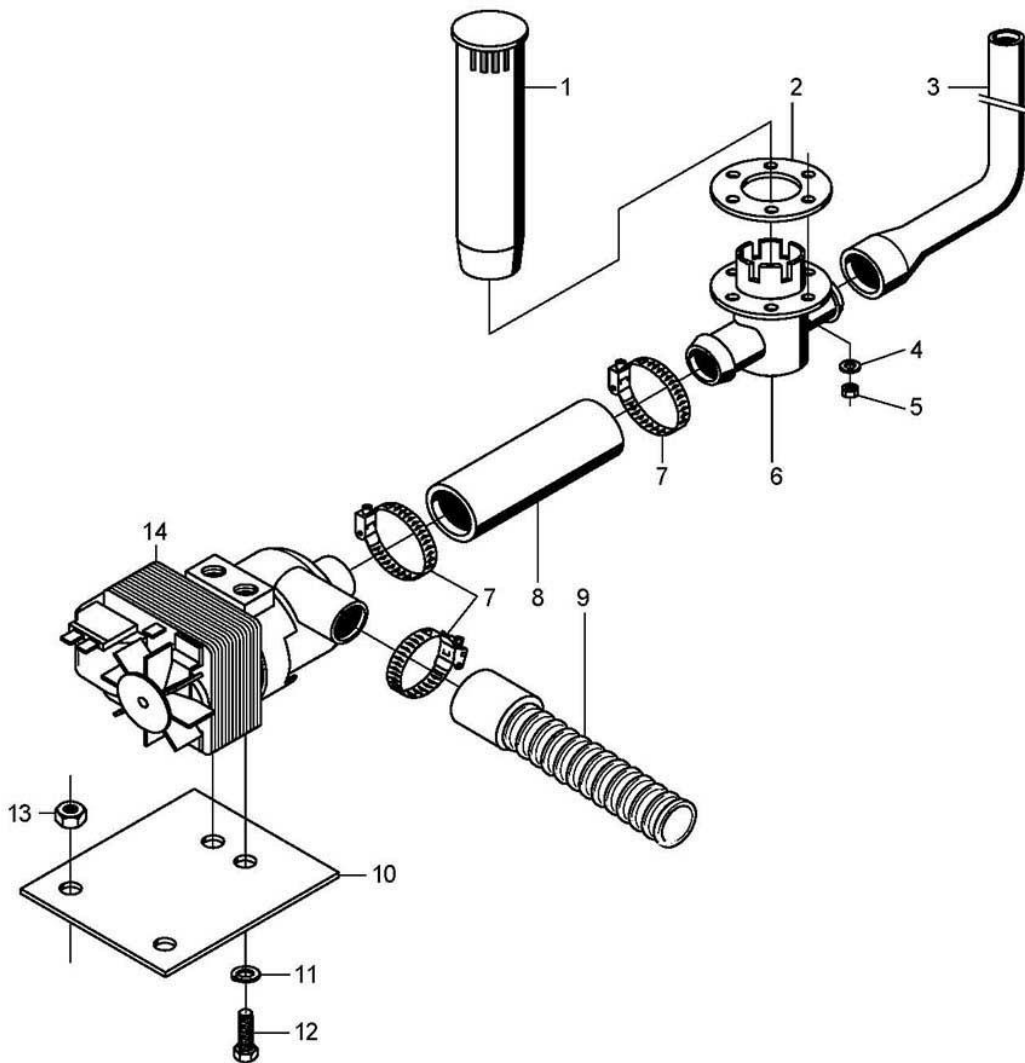
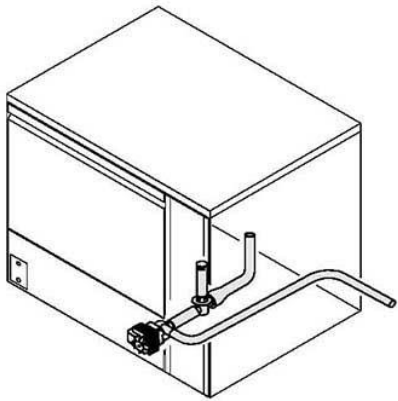


60002890-00

GSR 36, GSR 36E

Electrical parts II

Item.	Designation	Parts no.:	Pc.	Notes
1	Universal fuse clip	31 09 063	2	
2	Securing plug	31 09 072	2	
3	Fine fuse, medium time lag; 250V; 6,3A; 5 X 20	31 11 043	3	
4	Cable gland; PG29; 16-25 MM; IP68	31 10 123		
5	Cable gland; PG21; 10-18 MM; IP68	31 10 070	2	
6	UDK 4-PE double terminal	31 09 153	2	
7	UDK 4 BU double terminal	31 09 152	2	
8	UDK 4 double terminal	31 09 151	3	
9	Double terminal, UK, 5-Twin	31 09 115	19	
10	Snap-on rail; 7,5 X 35 X 172	60001733		
11	Contacteur B7:3H 1 N/C contact; 220-255V/50-60HZ	31 04 154		
11	Contacteur B7:3H 1 N/C contact; 200V/50-60HZ	31 04 171		Japan
12	Contacteur; A9-3S-1Ö; 230V/50-60HZ; 4KW	31 04 161		
13	Contacteur A16:3S: 1 N/C contact; 230V/50-60HZ; 7,5KW	31 04 162	3	
13	Contacteur A16:3S: 1 N/C contact; 200V/50-60HZ; 7,5KW	31 04 163	4	Japan
14	Snap-on rail; 7,5 X 35 X 249	62001917		
15	Programme switch EPS1.1; 230V/50-60HZ	31 05 131		
15	Programme switch EPS1.1 V2.0; 200V/240V 50-60HZ	31 05 132		
16	Contacteur box cover; 48 X 179 X 351	62001659		
17	Bracket; 1,25 X 215 X 435	60002598		to machine no.: 376 874
18	Bracket cpl.	60002669		From machine no.: 376 875
19	Relais box bottom part; 58 X 190 X 350	60001720		
20	Top hat rail; 7,5 X 35 X 350	60002670		From machine no.: 376 875
21	Rivet	36 02 219	3	From machine no.: 376 875
22	Radio interference suppression capacitor; 0,27MF + 2 X 27000PF	31 13 078		
23	Isolating disk	31 09 066		
24	Fixed bridge; 2-POLIG;	31 09 126	2	
25	NUG / Floating switch kit	60004616		Option
o.P.	Fixing clamp; KABEL D12,5; LOCH 4,2	31 10 124		
o.P.	Wiping function relay; 220-240V AC,15-300SEC	31 04 150		
o.P.	Relais; AC 180-254V, 2A	31 04 139	2	
o.P.	Cable Geared motor; 2 X 0,75QMM; 770 LG	60001272		
o.P.	Wiring loom heater/pump	60001282		
o.P.	Cable water softener; 2 X 0,75QMM; 650 LG	60002484		
o.P.	Wire assortment water softener	60002475		
o.P.	Wire assortment relay box	60001217		
o.P.	Relay box wiring loom	60002489		
o.P.	Clock unit; AC 220-240V	31 04 152		impulse filling



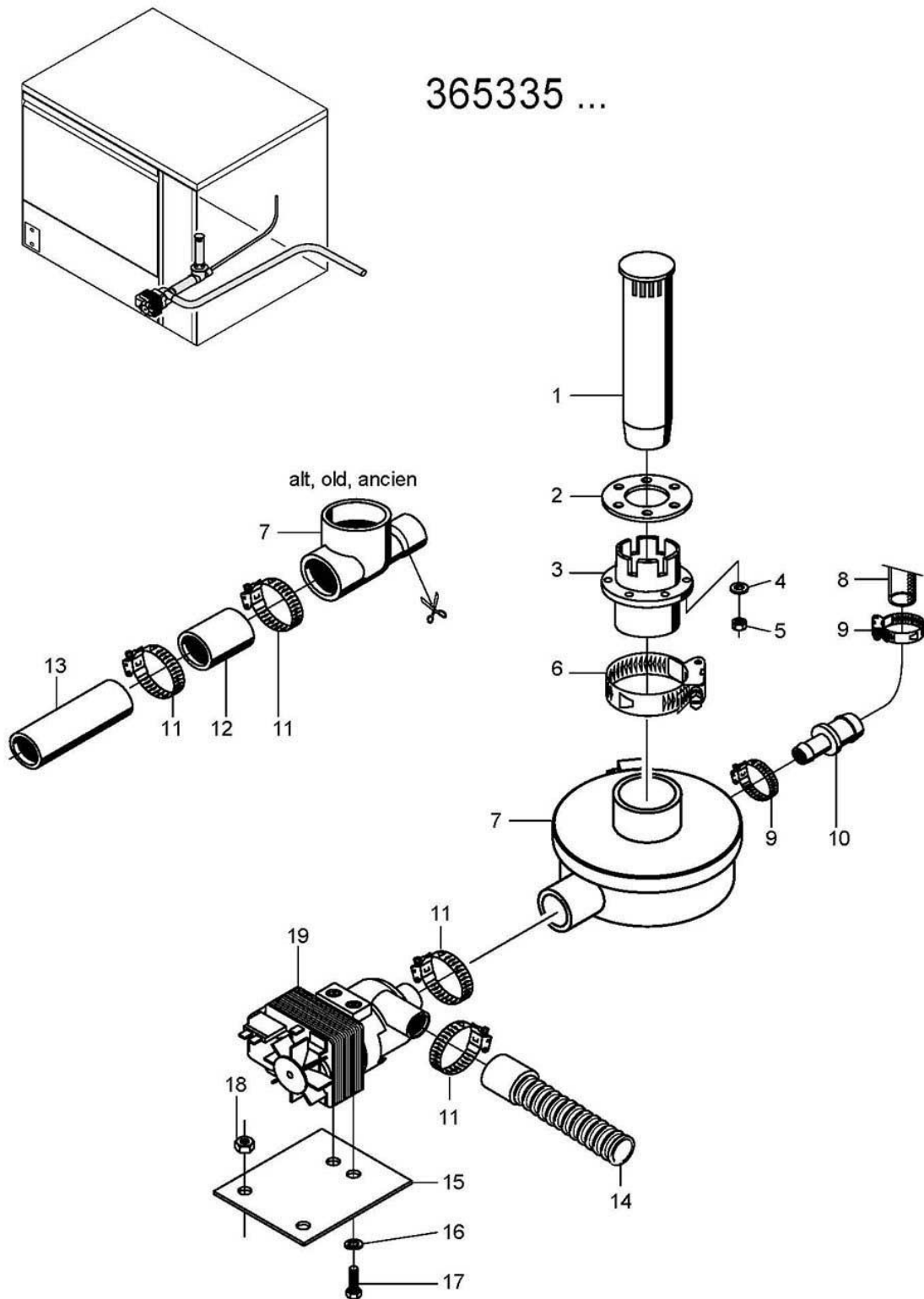
6002891-00

GSR 36, GSR 36E

Drain pump (optional) to machine no.: 365 334

Item.	Designation	Parts no.:	Pc.	Notes
1	Stand pipe; ÜBERLAUFHÖHE 130	62002768		
2	Gasket; D52 X D83,5 X 2,0	62001749		
3	Reducing elbow, DN13 X DN25	62002145		
4	Washer; D5,3 X D10 X 1,0	22 01 300		
5	Hexagonal nut; M5 SELBSTSICHERND	21 05 302		
6	Set stand pipe bottom part	55 28 223		GSR 36E
6	Stand pipe bottom part; D86 X 60	60001605		GSR 36
7	Hose clamp; D24-36 X 12	28 02 111		
8	Reinforced hose; DN25 X 4,5	40 01 038		110 mm; "By-the-metre" goods
9	Drain hose; 1500 LG	60003738		
10	Lug; 1,5 X 75 X 80	60002393		
11	Spring washer; B6	23 03 300		
12	Hexagon screw; M6 X 10; A70	20 01 332		
13	Hexagonal nut; M5 SELBSTSICHERND	21 05 302		
14	Drain pump; 220-240V/50HZ	31 02 010		
o.P.	Set drain pump	55 28 214		
o.P.	Wire assortment drain pump	60002476		

365335 ...

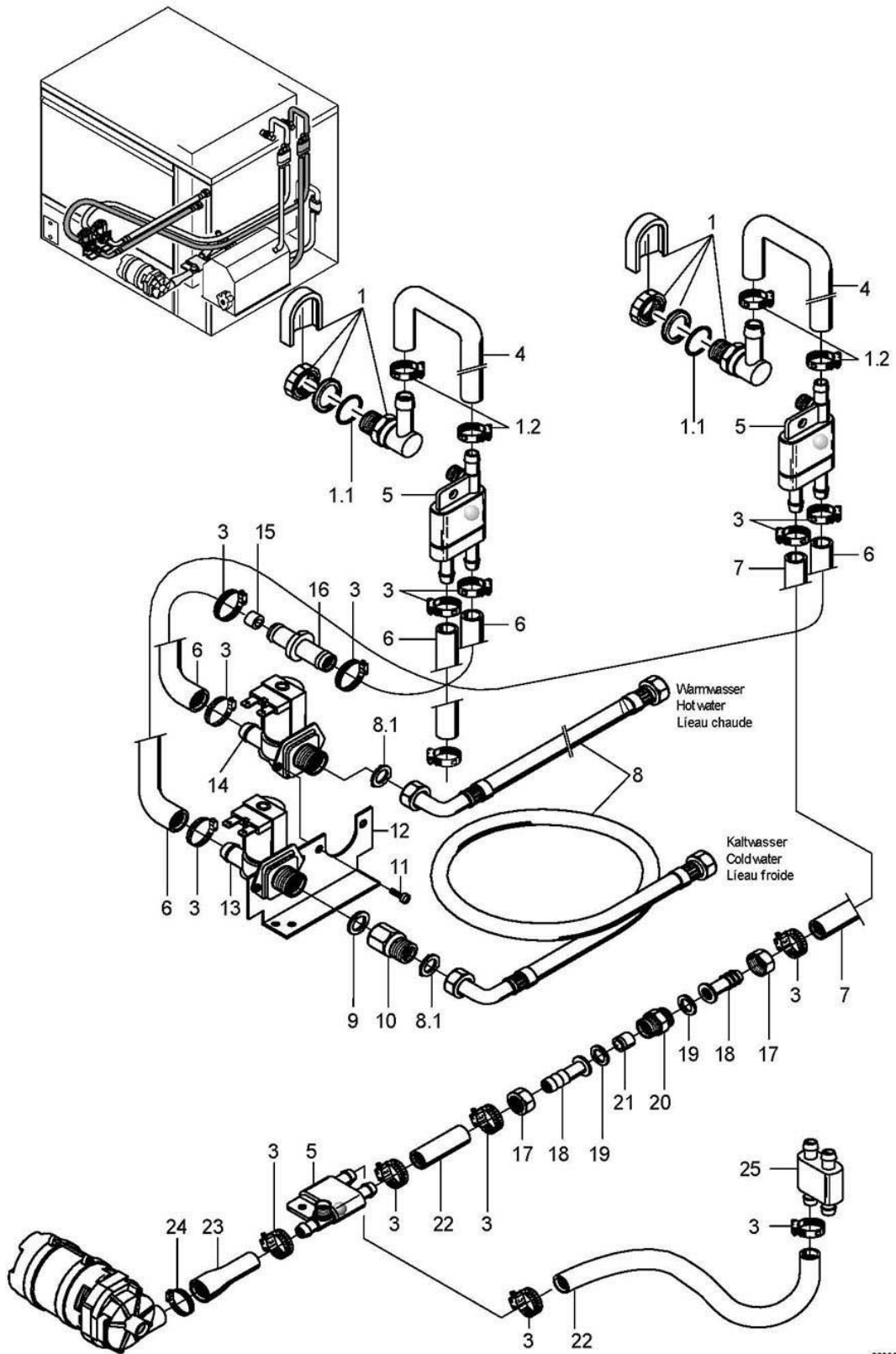


60002892-01

GSR 36, GSR 36E

Drain pump (optional) From machine no.: 365 335

Item.	Designation	Parts no.:	Pc.	Notes
1	Stand pipe; ÜBERLAUFHÖHE 130	62002768		
2	Gasket; D52 X D83,5 X 2,0	62001749		
3	Stand pipe bottom part; D87 X 50,5	62001805		
4	Washer; D5,3 X D10 X 1,0	22 01 300		
5	Hexagonal nut; M5 SELBSTSICHERND	21 05 302		
6	Hose clamp; D32-52 X 12	28 02 110		
7	Sump pan cpl.	60004146		
8	Industrial hose; DN19,4 X 3,5	40 01 016		500 mm; "By-the-metre" goods
9	Hose clamp; D20-30 X 12	28 02 109		
10	Hose connecting piece; 3/4" X 1/2" X 62 LG	29 06 520		
11	Hose clamp; D24-36 X 12	28 02 111		
12	Pipe; D25 X 1,5 X 30	62002131		
13	Reinforced hose; DN25 X 4,5	40 01 038		110 mm; "By-the-metre" goods
14	Drain hose; 1500 LG	60003738		
15	Lug; 1,5 X 75 X 80	60002393		
16	Spring washer; B6	23 03 300		
17	Hexagon screw; M6 X 10; A70	20 01 332		
18	Hexagonal nut; M5 SELBSTSICHERND	21 05 302		
19	Drain pump; 220-240V/50HZ	31 02 010		
o.P.	Set drain pump	55 28 214		
o.P.	Wire assortment drain pump	60002476		



60002393-00

GSR 36, GSR 36E

Cold water pre-rinse (optional)

Item.	Designation	Parts no.:	Pc.	Notes
1	Water inlet, 3-part set	55 31 007	2	
1.1	Gasket; D21 X D28 X 2,0	27 09 011		replaced by 55 31 007
1.1	Gasket; D20,5 X D28,5 X 2,0	27 01 002		replaced by 55 31 007
1.1	O-ring; 20 X 3	27 07 031		
1.2	Hose clamp; D12-22 X 9	28 02 105		
3	Hose clamp; D12-22 X 9	28 02 105		
4	Hose bend; DN12,5 X 4,0	40 03 056	2	adapt
5	Reverse suction preventer, top; PN6 BEI 60 GRAD C	35 01 193	3	
6	Hose elbow 90°; DN12,5X4,0;40X1400	60001610	3	
7	Industrial hose; DN13 X 3,5	40 02 035		920 mm; "By-the-metre" goods
8	Water supply hose; DN13 X 3,5; 2500	40 02 060	2	
8.1	Gasket; D16 X D24 X 3,0	80002241	2	
9	Gasket; D17 X D24 X 2,0	27 09 009		
10	Sleeve; G 3/4" X 34; SW30	83000288		
11	Countersunk screw, M4 X 8	20 10 309		
12	Solenoid valve bracket; 1,25 X 65,5 X 117	60001218		
13	Solenoid valve without flow control; 220-240V/50-60HZ	31 06 187		
13	Solenoid valve without flow control; 180-220V/50-60HZ	31 06 199		Japan
13.1	Solenoid valve filter	31 06 186		
14	Solenoid valve without flow control; 220-240V/50-60HZ	31 06 187		Pressure boiler
14	Solenoid valve flow restrictor 8l; 220-240V/50-60HZ	31 06 179		Pressure-independent boiler
14	Solenoid valve without flow control; 180-220V/50-60HZ	31 06 199		Japan; Machines with pressurized boiler
14	Solenoid valve flow restrictor 8l; 180-220V/50-60HZ	31 06 197		Japan; Pressure-independent boiler
14	Double solenoid valve; 220-240V/50-60HZ	31 06 182		
14	Double solenoid valve; 180-220V; 50-60HZ	31 06 200		Japan
14.1	Solenoid valve filter	31 06 186		
15	Quantity control; 5 L/MIN	31 06 195		Pressure-independent boiler
16	Adapter; D9,4 X D13,5 X 54	61004511		Pressure-independent boiler
17	Union nut; G 3/4" X D20,5; SW30	29 07 203	2	
18	Hose coupling; R 3/4" X 1/2"	60002453	2	
19	Gasket; D16 X D24 X 3,0	80002241	2	
20	Double nipple; G 3/4" X 26; SW27	30 11 207		
21	Check valve; DW 20	29 01 512		
22	Industrial hose; DN13 X 3,5	40 02 035		60 mm; "By-the-metre" goods
23	Reducing hose; DN13 X DN25; 720	60001606		
24	Hose clamp; D24-36 X 12	28 02 111		
25	Y-hose socket; D13	29 06 526		to machine no.: 366 560
25	Distributor for rinse manifold	62001391		From machine no.: 366 561
o.P.	Set cold pre-rinse	55 28 244		Inlet temperature more than 15°C
o.P.	Set cold pre-rinse	55 28 227		Inlet temperature less than 15°C
o.P.	Wiring loom cold rinse; 1 X 0,75QMM; 2370 LG	60001275		